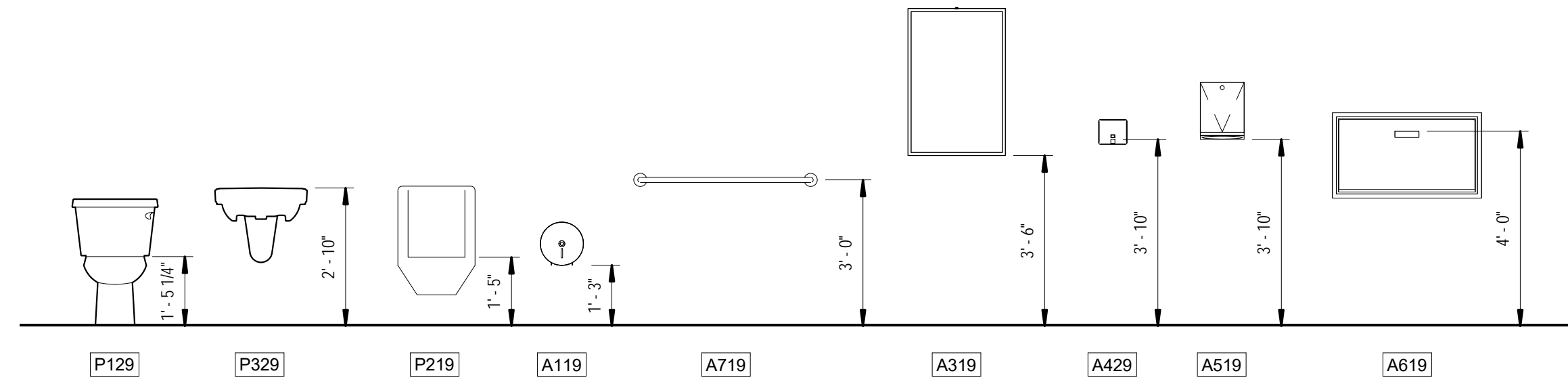


TOILET ROOM ACCESSORIES

MARK	TYPE	MANUFACTURER	MODEL	MATERIAL	FINISH	ACCESSIBLE	NOTES
A119	JUMBO ROLL DISPENSER	Bobrick Washroom Equipment, Inc.	B-2890				
A229	36" GRAB BAR	Bobrick Washroom Equipment, Inc.	B-5806x36				
A319	TILT MIRROR (M)	Bobrick Washroom Equipment, Inc.	B-293 2436	Stainless Steel 304-Satin			
A429	SOAP DISPENSER	Bobrick Washroom Equipment, Inc.	B-4112				
A519	PAPER TOWEL DISPENSER	Bobrick Washroom Equipment, Inc.	B-262				
A619	BABY CHANGING STATION	Bradley Corporation	962-11				Baby Changing Station
A719	42" GRAB BAR	Bobrick Washroom Equipment, Inc.	B-5806x42				
C210	FLOOR ALCOVE	Bradley Corporation	Baked Enamel - Series 500 - Floor Braced	Galvalume Steel		Yes	n/a

SHEET NOTES

- SEE PLUMBING SHEETS FOR PLUMBING FIXTURES, BLOW-UP PLAN AND ELEVATIONS SHOW TYPICAL FIXTURE AND ACCESSORY PLACEMENT AND CLEARANCES.
- ELECTRICAL RECEPTACLES AND LIGHT SWITCHES ARE NOT SHOWN FOR CLARITY. SEE ELECTRICAL SHEETS FOR ELECTRICAL COMPONENTS.
- CONTRACTOR CAN SUBSTITUTE ACCESSORIES AND FIXTURES OF EQUIVALENT PERFORMANCE AND QUALITY, PROVIDED THAT ALL INDICATED CLEARANCES AND MOUNTING HEIGHTS ARE MET. FOLLOW MANUFACTURER'S WRITTEN INSTRUCTIONS AND DIAGRAMS FOR THE INSTALLATION OF FIXTURES AND ACCESSORIES, INCLUDING BUT NOT LIMITING TO, MOUNTING HEIGHT, BLOCKING AND REINFORCING OF FRAMING TO PROVIDE ADEQUATE STRUCTURE AND SUBSTRATE FOR WALL ATTACHMENT.
- ABSENCE OR DOOR SWING INDICATED DOOR SWINGING OUTWARD.



**MOUNTING HEIGHT LEGEND**

Scale: 3/8" = 1'-0"

**EGI inc.**

Engineering Great Ideas, Inc.

1003 S Alexander Street, Suite 5  
 Plant City, Florida 33563  
 Tel: 813-752-7078  
 FBPE Certificate of Authorization #29098



12/12/2018 10:47:31 AM

DATE FRANCISCO J. MORENO-ORAMA  
 LICENSED ARCHITECT  
 #AR99008

I HEREBY CERTIFY THAT THESE PLANS HAVE BEEN PREPARED TO THE BEST OF MY KNOWLEDGE, IN ACCORDANCE WITH THE 2017 FLORIDA BUILDING CODE, 6TH EDITION, AND THE 2014 NATIONAL ELECTRIC CODE.

PERMIT DRAWINGS FOR:

**PALMETTO UMC ANNEX BUILDING**

5601 16TH AVE EAST CHURCH  
 PALMETTO, FL 34221

OWNER: FAMILY OF GOD UNITED METHODIST

ADDRESS: 5601 16TH AVE EAST PALMETTO, FL 34221

TELEPHONE: (352) 729-6055

EMAIL: PALMETTOUMC@HOTMAIL.COM

OWNER'S REPRESENTATIVE:  
 FRANK COSEGLIA, CHAIRMAN LEADERSHIP COUNCIL

REVISIONS

NO	DATE	DESCRIPTION

PROJECT NO: Project Number

FILE:

DRAWN BY: Author CHK'D BY: Checker

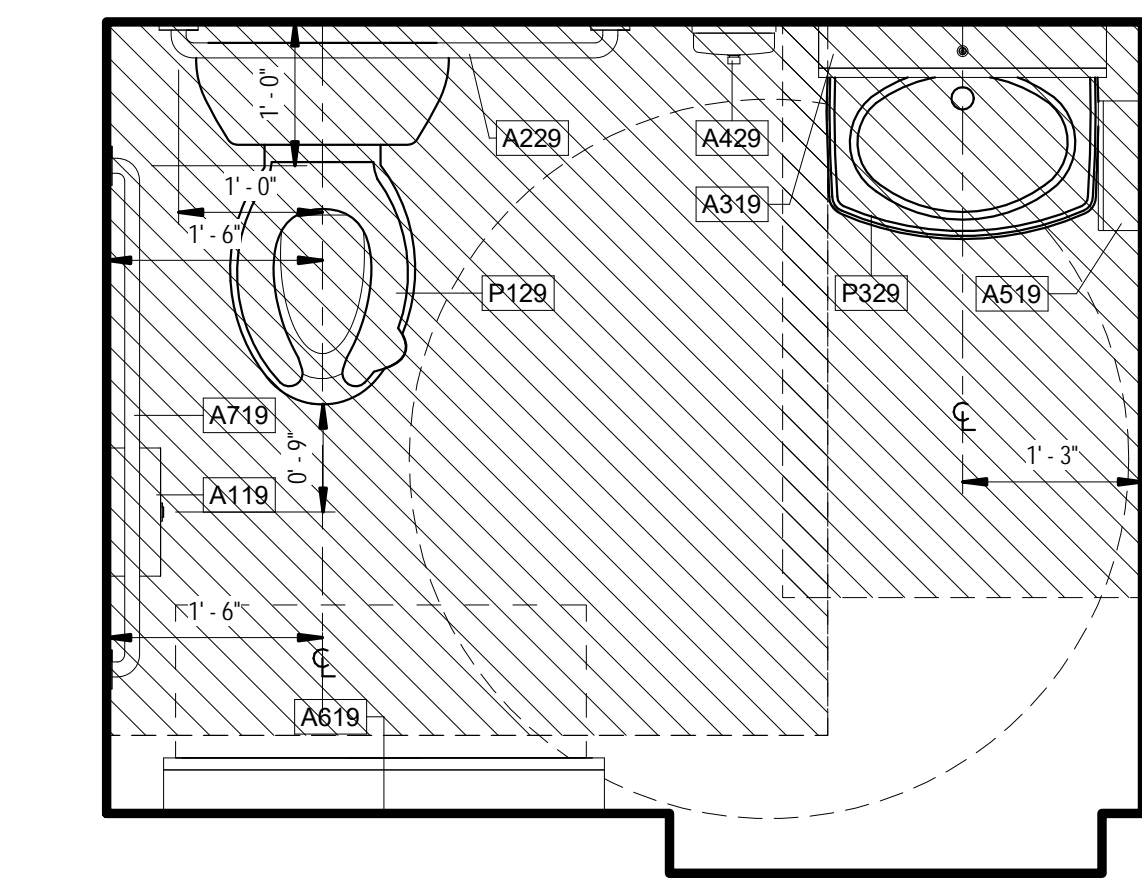
© 2018 ENGINEERING GREAT IDEAS, INC.

SHEET TITLE:

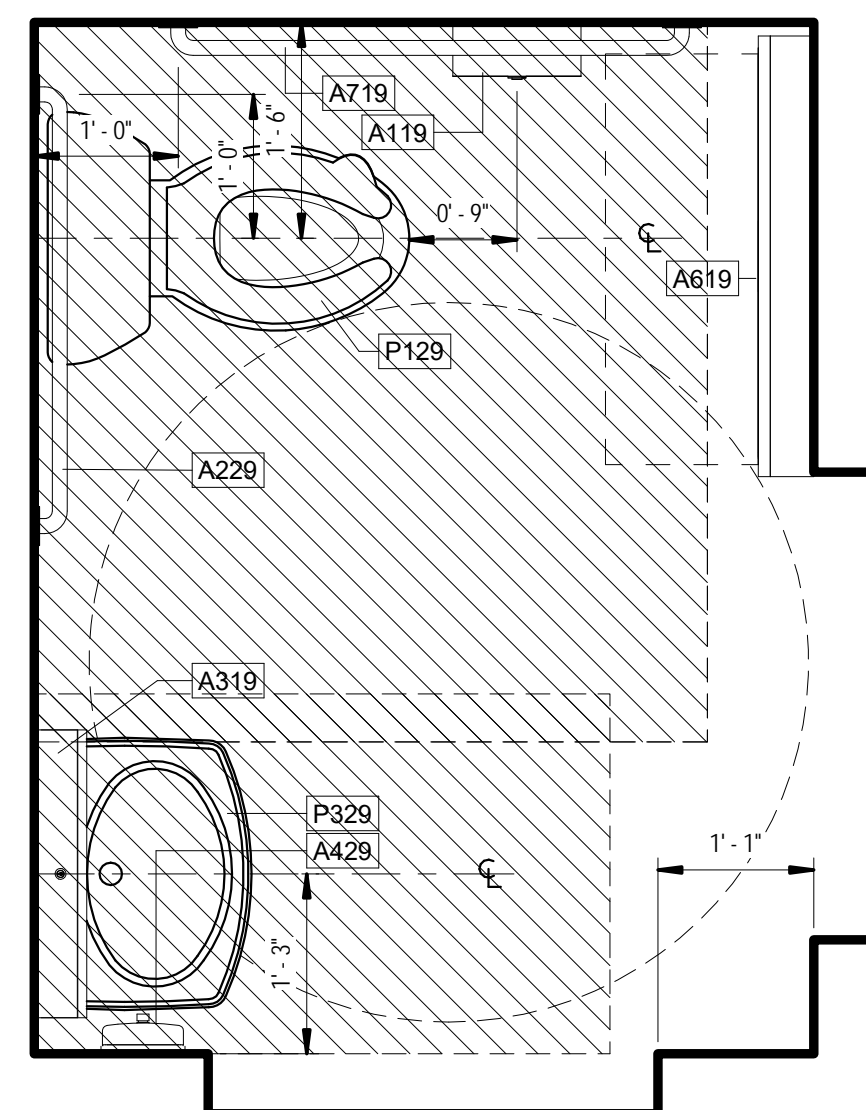
**WC ROOMS BLOW-UP PLANS**

SHEET COUNT: OF

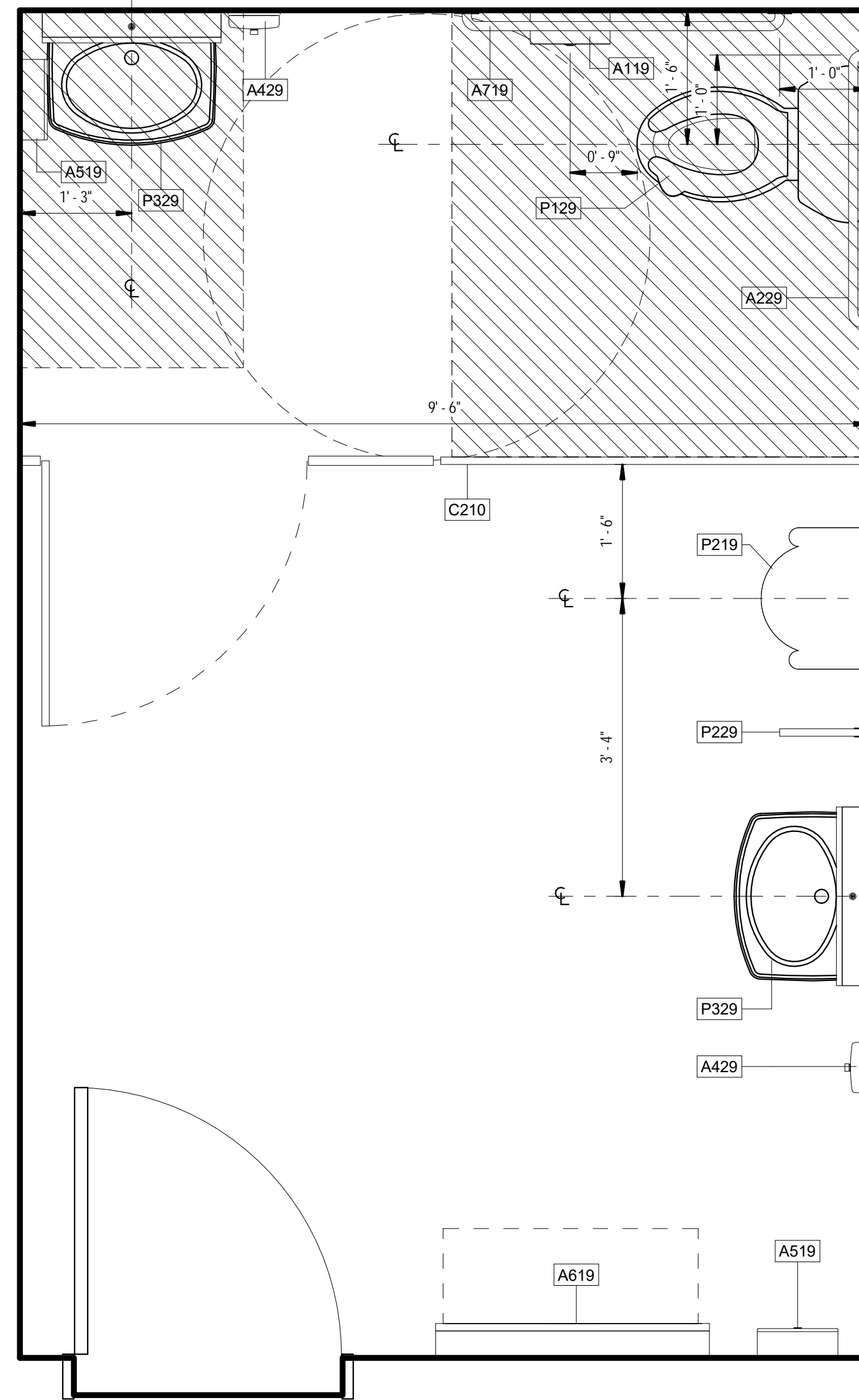
SHEET IDENTIFICATION:



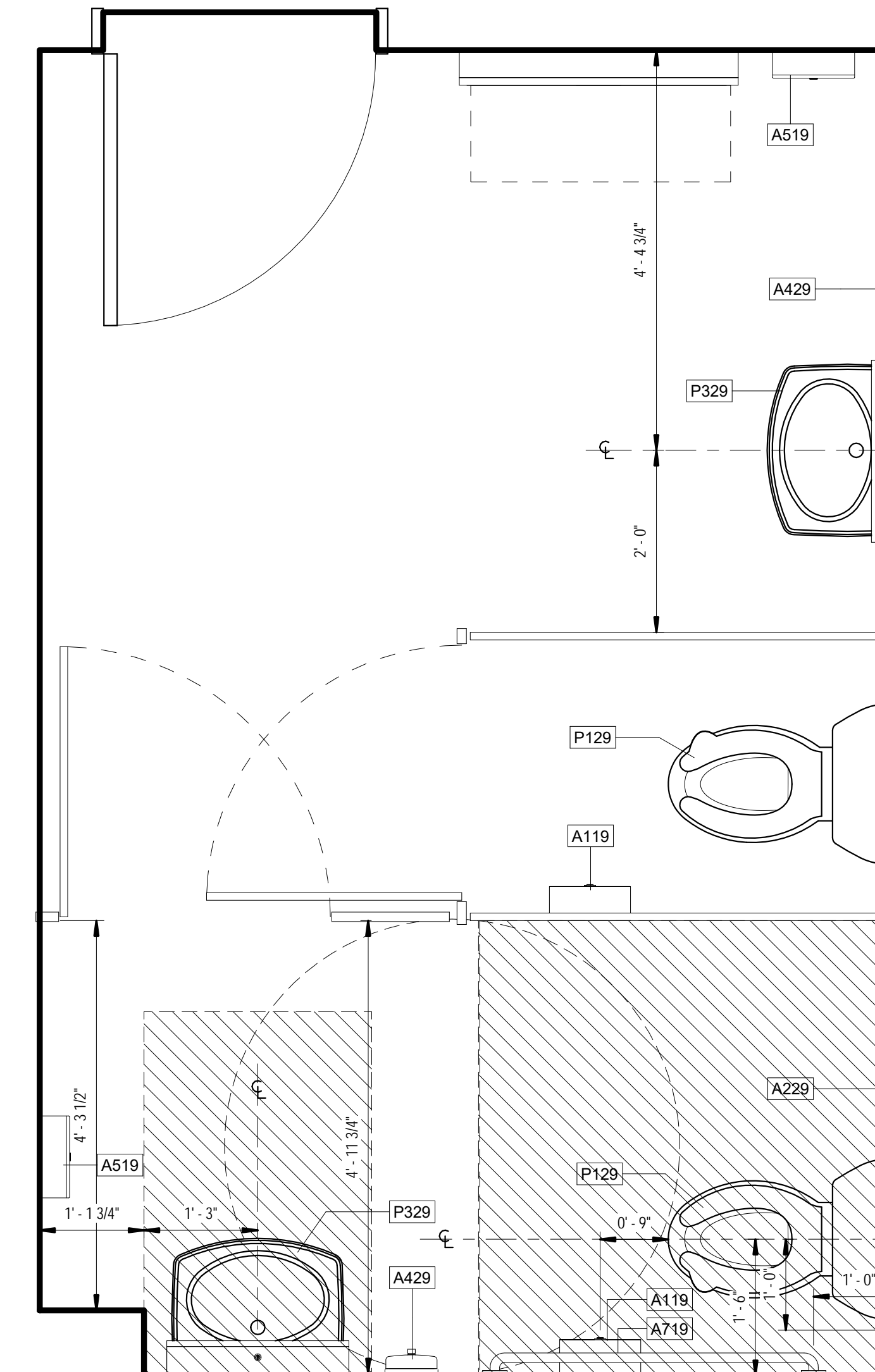
**B1 TOILET ROOM BLOW-UP PLANS**  
 SCALE: 3/4" = 1'-0"



**A1 TOILET ROOM BLOW-UP PLANS**  
 SCALE: 3/4" = 1'-0"



**A3 TOILET ROOM BLOW-UP PLANS**  
 SCALE: 3/4" = 1'-0"



**A5 TOILET ROOM BLOW-UP PLANS**  
 SCALE: 3/4" = 1'-0"

**A410**