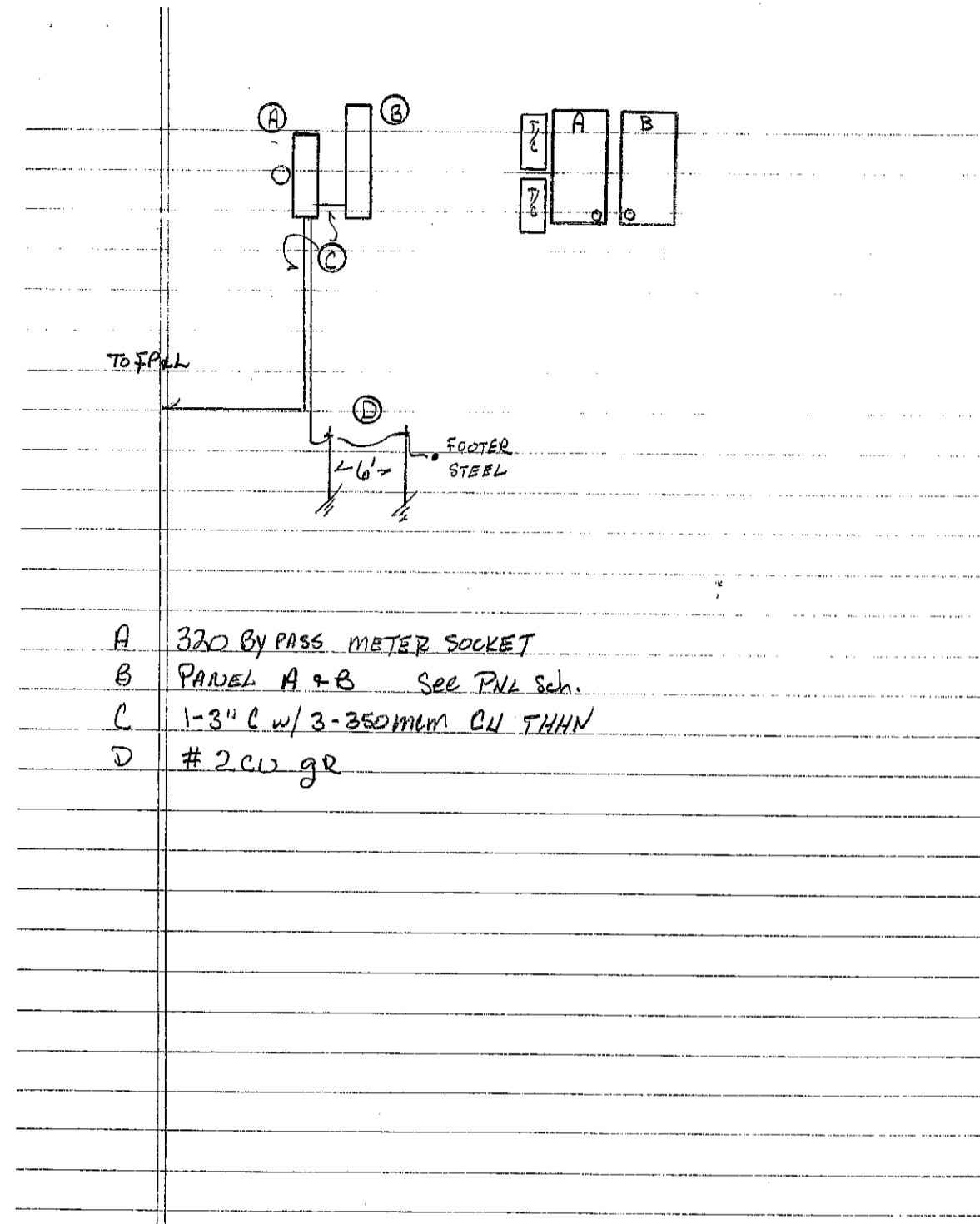


WE warrant that the drawings were prepared by a duly licensed professional engineer in the State of Florida, and that the drawings were prepared in accordance with the laws and regulations of the State of Florida, and that the drawings were prepared in accordance with the laws and regulations of the State of Florida.

**LOAD CALCULATIONS**

Sq. Ft. @ 3 watts 15,000 watts  
 Receptacles 22 @ 180 KA 3,960 watts  
 Motors (2 exh. Fans & 2 blowers) 4,630 watts  
 Water heater 3,500 watts  
 A/C or Heat 20,000 watts  
 Dryer 3,500 watts  
 Total: 50,590 watts  
 @ 240 volts/1 phase 211 amps

Service: 300 amp/240 volt/1 phase



- 4 WLN232A-UNV-EBB1U
- 3 WPCCF42
- 5 APCTR
- 2 APFL
- 6 SSF296TB-UNV-EBB1
- 35 2GRB-332A-UNV-EBB1U

**PANEL SCHEDULE**

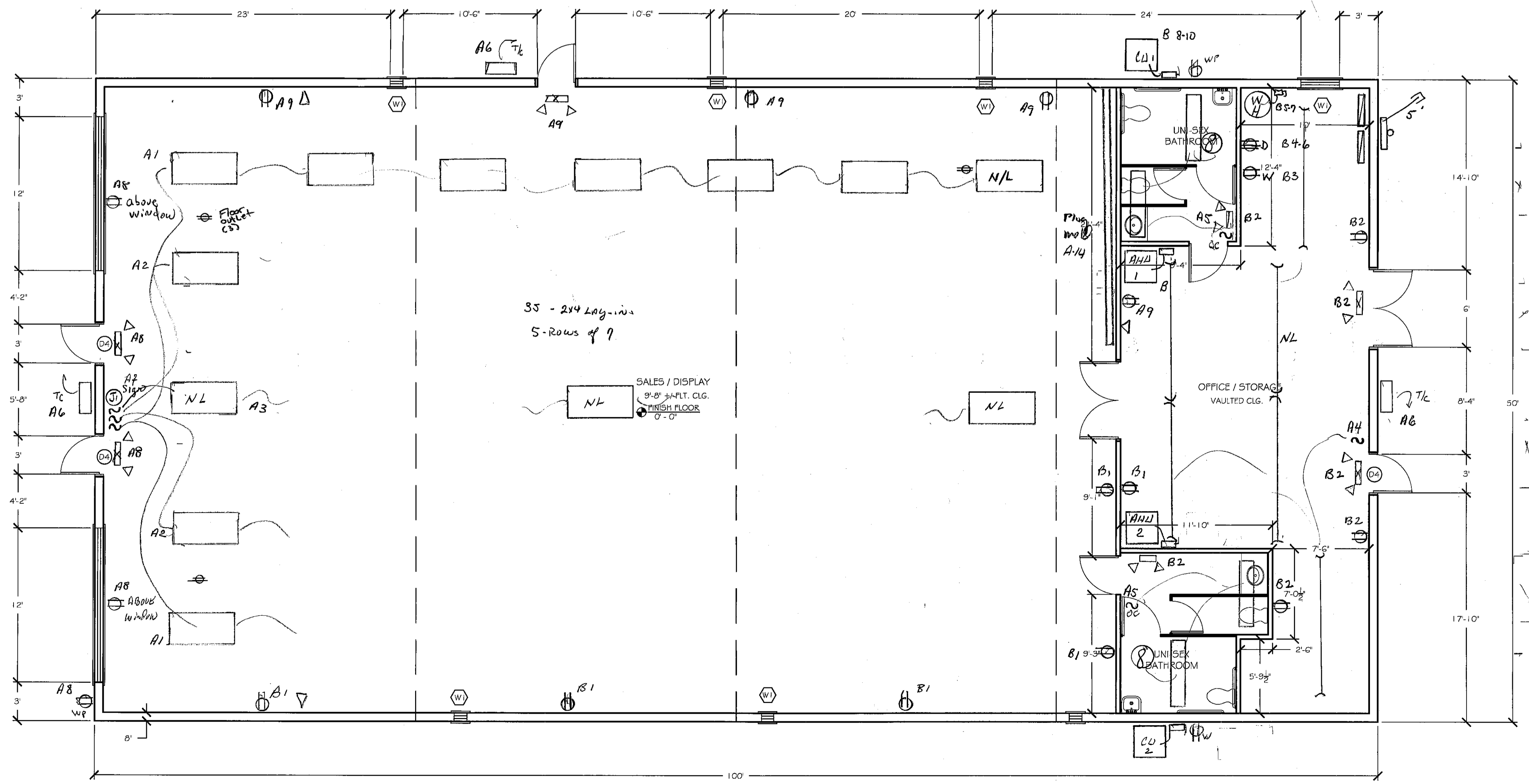
PANEL A AMPS 150 VOLTS 240 PHASE 1  
 FEED FROM Meter WITH 1-2 CONDUIT (ø) W/ 1/0 PH  
 MB 150 OR MLO  
 LOAD 127 WATTS 30.430 AMPS

Ch.	Description	Watts	Amperes	Poles	Ch.	Description	Watts	Amperes	Poles
1	Showroom lights	1837	20	2	2	Showroom lights	1837	20	2
3	Showroom lights	918	20	4	4	officestorage lights	840	20	2
5	Restrooms	710	20	6	6	exterior lights - time clock	158	20	2
7	Sign - time clock	1250	20	8	8	recept - exits - NL	720	20	2
9	Recept - exit	1260	20	10	10	CU 2	8160	20	2
11	AHU 2	1150	60	12	12	CU 2	-	40	2
13	AHU 2	-	60	14	14	Plug mold strip	1250	20	2
15				16					
17				18					
19				20					
21				22					
23				24					
25				26					
27				28					
29				30					
31				32					
33				34					
35				36					
37				38					
39				40					
41				42					

**PANEL SCHEDULE**

PANEL B AMPS 150 VOLTS 240 PHASE 1  
 FEED FROM Meter WITH 1-2 CONDUIT (ø) W/ 1/0 PH  
 MB 150 OR MLO  
 LOAD 30,070 WATTS 126 AMPS

Ch.	Description	Watts	Amperes	Poles	Ch.	Description	Watts	Amperes	Poles
1	Recept.	900	20	2	2	Recept-Eng. Lights-Exits	1260	20	2
3	Washer	1250	20	4	4	Dryer	3500	30	2
5	Water Heater	3500	30	6	6	Dryer	-	30	2
7	Water Heater	-	30	8	8	CU 1	8160	40	2
9	AHU 1	1150	60	10	10	CU 1	-	40	2
11	AHU 1	-	60	12	12				
13				14					
15				16					
17				18					
19				20					
21				22					
23				24					
25				26					
27				28					
29				30					
31				32					
33				34					
35				36					
37				38					
39				40					
41				42					



**FLOOR PLAN**  
 SCALE 3/16" = 1'-0"

CONTRACTOR:

TITLE: ELECTRIC

OWNER AND ADDRESS:  
**FIRST UNITED METHODIST CHURCH**  
 330 11th AVENUE WEST  
 PALMETTO, FL  
 NOV 14

**BENSON ENGINEERING, INC.**  
 ENGINEERS PLANNERS SURVEYORS  
 522 9TH STREET WEST, SUITE 2 BRADENTON, FL 34205  
 Phone: (841) 792-9161 Fax: (841) 746-5335

**RAISED SEAL**  
 SEAL: \_\_\_\_\_  
 DATE: \_\_\_\_\_  
 JULIAN A. AGUILAR N.  
 # 71367  
 3550 59th AVE. DR. W.  
 APT. D208  
 BRADENTON, FL. 34210

SCALE	SHOWN
JOB #	212035
DATE	09/25/12
DRW BY	JBB
SHEET	
8	
OF 9 SHEETS	