

SCHEDULE - FIXTURE CONNECTION				
FIXTURE #	FIXTURE TYPE	MINIMUM SIZE UTILITY TO FIXTURE		
		WASTE CONNECTION	HOT WATER SUPPLY	COLD WATER SUPPLY
F-1	WATER CLOSET	3"	---	1/2"
F-2	LAVATORY	1-1/4"	3/8"	3/8"
F-2A	LAVATORY - PEDESTAL	1-1/4"	3/8"	3/8"
F-3	BATHTUB	1-1/2"	1/2"	1/2"
F-4	KITCHEN SINK	1-1/2"	1/2"	1/2"
F-5	WASHING MACHINE	2"	1/2"	1/2"
F-6	ICE MAKER	---	---	3/8"

SCHEDULE - ELECTRIC WATER HEATER						
MARK	MODEL	STORAGE CAPACITY GALLONS	KW INPUT	GPH RED 90 DEG RISE	TEMP OF WATER TO BE DEL.	ACCESSORIES
EW-1	F6-50 20LS	47	4.5	20	120	1-5

**NOTE:**  
 1. ALL UNITS SHALL MEET ASHRAE 90-75 AND ALL LOCAL CODE REQUIREMENTS, AND SHALL BE ADA CERTIFIED.  
**ACCESSORIES:**  
 1. T&P RELIEF VALVE.  
 2. DIELECTRIC FITTINGS ON INLET & OUTLET.  
 3. GATE VALVES (CW SIDE ONLY) WITH UNIONS ON WATER INLET AND OUTLET CONNECTIONS.  
 4. LOCAL WATER HEATERS AS INDICATED ON PLANS.  
 5. ROUTE DRAIN PAN AND T&P RELIEF TO DRAIN, SEE WATER HEATER DETAIL.

SELECTION BASED ON STATE (EQUALS INCLUDE A.O. SMITH AND RHEEM)

### PLUMBING FIXTURE SCHEDULE

UNLESS OTHERWISE INDICATED, NUMBERS ARE AMERICAN STANDARD. EQUAL PRODUCTS: KOHLER, CRANE, ELIER, OLSONITE, SPERZEL, DELTA, MANSFIELD, SIMONS, BRADLEY, GERBER, CENTOCO, HALSEY TAYLOR, PAT. STERN-WILLIAMS, ZURN, DELANY, CHURCH, BENEKE.

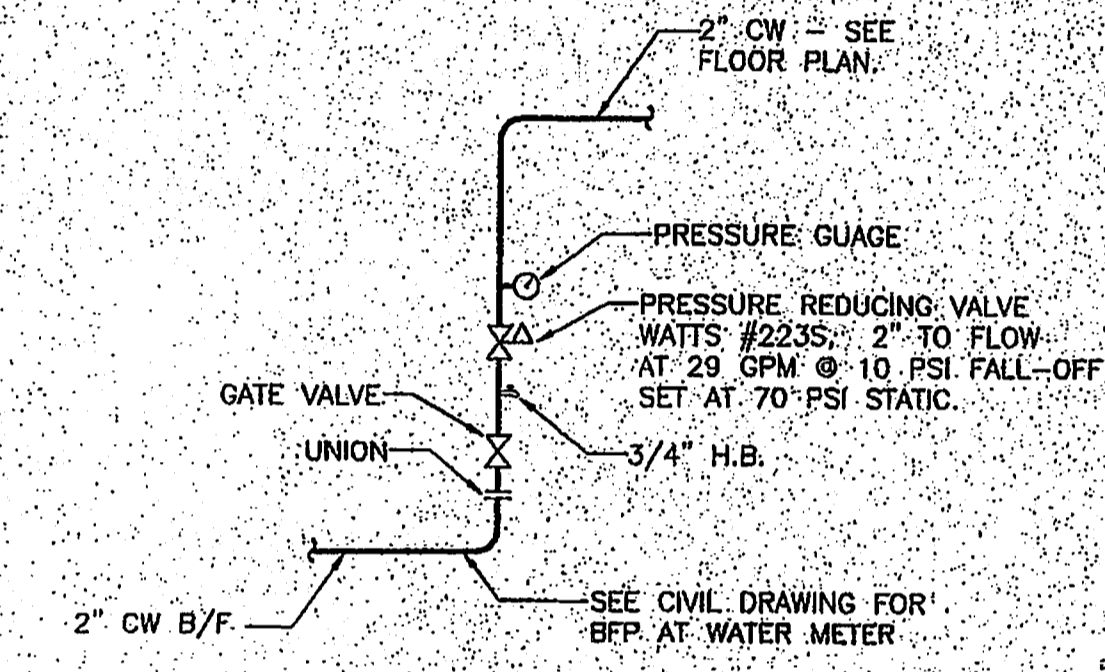
- F-1. WATER CLOSET - FLOOR MOUNTED - TANK - ELONGATED - OPEN FRONT SEAT LESS COVER - CRANE 3-944E-RADCLIFF 1.5 GPF ELONGATED WATER CLOSET SPHON JET WATER SINK. BENS 1655-C OPEN FRONT HEAVY DUTY SOLID PLASTIC ELONGATED SEAT. MCQUIRE 170 SUPPLY TO WALL WITH WHEEL HANDLE STOP, WALL NIPPLE AND ESCUTCHEON AND FLEXIBLE RISER.
- F-2. LAVATORY - COUNTERTOP TYPE - GRID DRAIN - SINGLE LEVER. CRANE 1-319-V GALAXY, ENAMELED STEEL SELF-RIMMING 20" X 17" LAVATORY PUNCHED ON 4" CENTERS. SYMONS S-20-G SINGLE LEVER FAUCET WITH AERATOR, LESS DRAIN, 1/2" MALE THREADED CONNECTORS, AMERICAN STANDARD 2411.016 GRID DRAIN WITH 1-1/4" TAILPIECE. MCQUIRE 170 SUPPLY TO WALL WITH WHEEL HANDLE STOP, EXTENSION TUBE TO WALL AND FLEXIBLE RISERS. MCQUIRE 8872 P-TRAP 1-1/4" X 1-1/4" WITH CAST BRASS NUTS AND CLEANOUT PLUG.
- F-2A. LAVATORY - PEDESTAL - POP-UP DRAIN. "MAGNOLIA" PEDESTAL 20" X 17" LAVATORY, VITREOUS CHINA LAVATORY PUNCHED ON 4" CENTERS. MOEN 4935 TWO HANDLE FAUCET WITH AERATOR, POP-UP DRAIN, 1/2" MALE THREADED CONNECTORS, MCQUIRE 167 CHROME PLATED ANGLE SUPPLY WITH 1/2" O.D. X 12" FLEXIBLE RISER AND 3/8" I.P.S. X 1/2" O.D. WHEEL HANDLE STOP WITH WROUGHT ESCUTCHEON, PVC P-TRAP.
- F-3. BATHTUB - STERLING Y-OC-60-42-60" X 30" STANDARD TUB WITH SLIP RESISTANT BOTTOM. DELTS 1323-0165 - PRESSURE BALANCED, ANTI-SCALD SHOWER VALVE, 6" DIVERTER SPOUT AND SHOWER HEAD, CS&B LIFT & TURN WASTE AND OVERFLOW.
- F-4. KITCHEN SINK - TWO COMPARTMENT WITH DISPOSER. DAYTON D-23322 TWO COMPARTMENT, 20 GAUGE STAINLESS STEEL SELF-RIMMING SINK 33" X 22" X 7-1/4" DEEP, AMERICAN STANDARD 4205.029 RELIANT SINGLE LEVER KITCHEN SINK FAUCET WITH HOSE AND SPRAY, 4331.013 CRUMB CUP STRAINER, NATIONAL DISPOSER, NDS-110-B, 1/2 HP CONTINUOUS FEED DISPOSER, MCQUIRE 167 SUPPLY TO WALL WITH WHEEL HANDLE STOP AND FLEXIBLE RISERS, MCQUIRE 8912, 1-1/2" P-TRAP WITH CLEANOUT PLUG.
- F-5. WASHING MACHINE BOX. OATEY 35894 SINGLE LEVER VALVE; ELIMINATOR OUTLET BOX WITH FACE PLATE AND TAILPIECE.
- F-6. ICE MAKER SUPPLY. OATEY 35811 ICE MAKER BOX WITH ADJUSTABLE FACE PLATE.
- NFWH - WALL HYDRANT-NON-FREEZE. WOODFORD MODEL 867 3/4" NON-FREEZE WALL HYDRANT WITH CONCEALED BOX & DOOR. STEM TO BE 6" LONG, PROVIDE WATTS SERIES 8 HOSE CONNECTION VACUUM BREAKER.
- FOO - CLEAN-OUT TO BE BRASS PLUG AND COVER, SET FLUSH WITH FLOOR SURFACE.
- YCO - PVC CLEAN-OUT PLUG, VERTICAL TO HORIZONTAL TRANSITION TO BE MADE WITH ONE LONG SWEEP OR WITH TWO 1/8 BENDS. CLEAN-OUT TO BE IN 12" X 12" X 6" DEEP PAD SET FLUSH WITH GRADE.

### PLUMBING NOTES

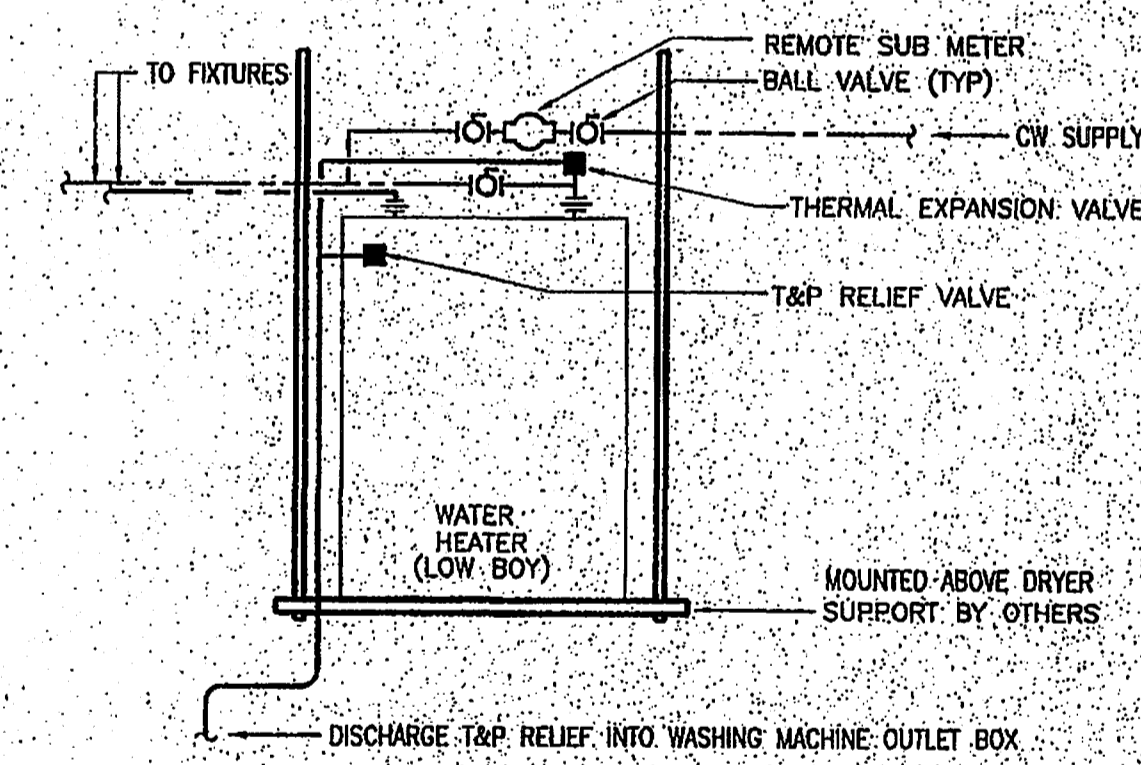
1. COLD AND HOT WATER PIPING ABOVE GRADE SHALL BE TYPE M HARD DRAWN COPPER TUBING CONFORMING TO ASTM B-88 WITH SWEAT JOINTS AND CAST OR WROUGHT FITTINGS. JOINTS SHALL BE MADE WITH LEAD FREE SOLDER. I.M. HARRIS "BRIDGIT" OR EQUAL. COLD WATER PIPING BELOW GRADE SHALL BE TYPE L COPPER TUBING WITH CAST OR WROUGHT FITTINGS AND JOINTS SAME AS ABOVE GRADE. JOINTS SHOULD NOT BE PERMITTED UNDER FLOOR SLABS. WATER PIPING BELOW GRADE THROUGH CONCRETE SHALL BE PROTECTED WITH PLASTIC SLEEVES. WHERE JOINTS ARE BELOW SLAB, THEY MUST BE BRAZED OR WITH SILVER SOLDER.
2. HOT AND COLD WATER PIPING ABOVE GROUND 2 INCHES AND SMALLER MAY BE CPVC (CTS) PER ASTM-D-2846 STANDARDS WITH SOLVENT JOINTS AND CPVC (CTS) FITTINGS (SUITABLE FOR WORKING PRESSURES OF 100 PSIG AT 180 DEGREES F.) AT OWNER'S REQUEST.
3. SANITARY WASTE & VENT, AND STORM DRAIN PIPING ABOVE GROUND SHALL BE SCHEDULE 40 DWV PVC WITH SOLVENT JOINTS.
4. SANITARY WASTE & STORM DRAIN PIPING BELOW GROUND SHALL BE SCHEDULE 40 DWV PVC WITH SOLVENT JOINTS.
5. ALL PLUMBING WORK SHALL BE IN ACCORDANCE WITH THE UNIFORM PLUMBING CODE AND ALL APPLICABLE LOCAL CODES AND ORDINANCES.
6. ALL PIPING PENETRATING CEILING AND WALLS SHALL BE INSTALLED WITH CHROME-PLATED ESCUTCHEONS AT THE PENETRATION. ALL PIPING PENETRATING EXTERIOR WALLS AND ROOFS SHALL BE FLASHED IN AN APPROVED MANNER AND SHALL BE PROTECTED AS REQUIRED BY LOCAL CODE AUTHORITY.
7. NOT USED.
8. ALL PIPING ABOVE GRADE SHALL BE PROPERLY SUPPORTED BY THE BUILDING STRUCTURE AND SHALL NOT REST ON CEILING TILES OR CEILING STRUCTURE.
9. SHOP DRAWINGS SHALL BE SUBMITTED TO AND REVIEWED BY THE ARCHITECT PRIOR TO ORDERING, PURCHASING, OR FABRICATING ANY MECHANICAL EQUIPMENT. SHOP DRAWINGS SHALL INCLUDE ALL EQUIPMENT SCHEDULED ON THE DRAWINGS; PLUMBING FIXTURES AND TRIM; WATER HEATERS AND ACCESSORIES; PIPE, VALVES, AND FITTINGS; SANITARY AND WATER RISER DIAGRAMS; INSULATION.
10. CONTRACTOR SHALL COORDINATE ELECTRICAL CHARACTERISTICS AND REQUIREMENTS OF ALL PLUMBING EQUIPMENT WITH THE ELECTRICAL DRAWINGS, AND SHALL FURNISH EQUIPMENT WIRED FOR THE VOLTAGES SHOWN THEREIN.
11. WATER PIPING ROUTED ABOVE CEILING AND IN EXTERIOR WALLS SHALL BE ROUTED ON HEATED SIDE (UNDERSIDE) OF CEILING INSULATION AND HEATED SIDE (INSIDE) OF WALL INSULATION.
12. ALL PLUMBING EQUIPMENT SHALL BE INSTALLED ACCORDING TO MANUFACTURER'S RECOMMENDATIONS.
13. ALL PLUMBING EQUIPMENT AND SYSTEMS SHALL BE GUARANTEED FOR A PERIOD OF ONE YEAR AFTER START-UP.
14. ALL WORK SHALL BE COORDINATED AND PERFORMED WITH PRIOR APPROVAL FROM THE OWNER TO SUIT HIS OPERATING CONDITIONS.
15. ALL PLUMBING EQUIPMENT REQUIRING ELECTRICAL POWER SHALL BE INSTALLED WITH DISCONNECT SWITCHES AT EACH PIECE OF EQUIPMENT. COORDINATE SWITCH TYPE (FUSED OR NON-FUSED), WITH ELECTRICAL DRAWINGS.
16. WATER HEATERS LOCATED ABOVE THE FIRST FLOOR SHALL BE INSTALLED WITH DRAIN PANS UNDER HEATERS. ROUTE PAN DRAINS TO P-TRAP ON FIRST FLOOR.
17. ALL SHOWER HEAD ARMS SHALL BE SECURED TO ADJACENT STRUCTURE.

### PLUMBING LEGEND

SYMBOL	ABBREVIATION	DESCRIPTION
---	A/C	ABOVE CEILING
---	B/F	BELOW FLOOR
---	B/G	BELOW GRADE
---	CW	COLD WATER PIPING
---	DN	DOWN
---	FCO	FLOOR CLEANOUT
---	FD	FLOOR DRAIN
---	GV	GATE VALVE
---	HC	HANDICAPPED
---	HW	HOT WATER PIPING
---	P	P-TRAP
---	PRV	PRESSURE REDUCING VALVE
---	S/W	SOIL/WASTE PIPING
---	V	VENT PIPING
---	VTR	VENT THRU ROOF
---	WCO	WALL CLEANOUT
---	WH	WALL HYDRANT
---	YCO	YARD CLEANOUT



**WATER ENTRANCE DETAIL**  
NOT TO SCALE



**TYPICAL WATER HEATER/A.C. UNIT ROOM LAYOUT**  
NOT TO SCALE

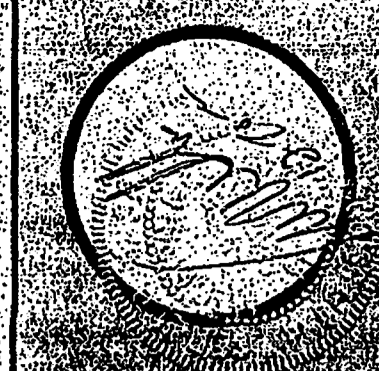
BY	DATE	DESCRIPTION
011205	01/12/05	7700 COOPER CREEK BLVD
011206	01/12/05	7700 COOPER CREEK BLVD
011207	01/12/05	7700 COOPER CREEK BLVD
011208	01/12/05	7700 COOPER CREEK BLVD
011209	01/12/05	7700 COOPER CREEK BLVD
011210	01/12/05	7700 COOPER CREEK BLVD
011211	01/12/05	7700 COOPER CREEK BLVD
011212	01/12/05	7700 COOPER CREEK BLVD
011213	01/12/05	7700 COOPER CREEK BLVD
011214	01/12/05	7700 COOPER CREEK BLVD
011215	01/12/05	7700 COOPER CREEK BLVD
011216	01/12/05	7700 COOPER CREEK BLVD
011217	01/12/05	7700 COOPER CREEK BLVD
011218	01/12/05	7700 COOPER CREEK BLVD
011219	01/12/05	7700 COOPER CREEK BLVD
011220	01/12/05	7700 COOPER CREEK BLVD
011221	01/12/05	7700 COOPER CREEK BLVD
011222	01/12/05	7700 COOPER CREEK BLVD
011223	01/12/05	7700 COOPER CREEK BLVD
011224	01/12/05	7700 COOPER CREEK BLVD
011225	01/12/05	7700 COOPER CREEK BLVD
011226	01/12/05	7700 COOPER CREEK BLVD
011227	01/12/05	7700 COOPER CREEK BLVD
011228	01/12/05	7700 COOPER CREEK BLVD
011229	01/12/05	7700 COOPER CREEK BLVD
011230	01/12/05	7700 COOPER CREEK BLVD

REVIEWED FOR CODE COMPLIANCE  
STANDARD CODES  
S' ACCI  
PERMIT NO. \_\_\_\_\_  
REVIEW COMPLETED  
PLANS EXAMINER

THESE DRAWINGS HAVE NOT BEEN REVIEWED FOR COMPLIANCE WITH THE PLUMBING (MECHANICAL) (GAS) (ELECTRICAL) CODE(S) ANY QUESTIONS REGARDING THE REQUIREMENTS OF THESE CODES SHOULD BE DIRECTED TO THE SENIOR INSPECTOR IN THE APPROPRIATE TRADE.

01120814  
MAR 01 2002

**Jordan & Skala Engineers, Inc.**  
 Job Number: 0110380  
 6030-P UNRY BIRNE, NORCROSS, GA 30071  
 PHONE: (770)442-5547 FAX: (770)448-0262  
 EMAIL: jse@jordanandskala.com



Carolina Landing at University Place  
 A Townhome Rental Community  
 1000 University Place, Raleigh, NC 27603

Date: 12-10-01
Date: _____
Date: _____
Date: _____
Date: _____
Date: _____
Date: _____
Date: _____
Date: _____
Date: _____

