

LEGEND		
SYMBOL	DESCRIPTION	ABBREVIATIONS
	CEILING DIFFUSER W/ FLEX DUCT	CD
	CEILING RETURN GRILLE W/ FLEX DUCT	C/RAG
	SIDEWALL SUPPLY AIR GRILLE	S, REG
	SIDEWALL RETURN AIR GRILLE	RAG
	FIRE DAMPER	FD
	MANUAL VOLUME DAMPER	MVD
	CHILLED FAN	CF
	THERMOSTAT	T STAT
	EQUIPMENT DESIGNATION	---
	AIR DISTRIBUTION DEVICE TAG, BALANCE TO 205 CFM	---
	RETURN AIR	RA
	SUPPLY AIR	S.A.
	ABOVE FINISHED FLOOR	AF
	EXTERNAL STATIC PRESSURE (N.W.C.)	ESP
	DRY BULB	DB
	WET BULB	WB
	ENTERING AIR TEMPERATURE	EAT
	LEAVING AIR TEMPERATURE	LAT
	OUTSIDE AIR	OA

SCHEDULE - PACKAGED TERMINAL HEAT PUMP UNITS											
TAG	MODEL No.	TOTAL CFM	MIN. O.A. CFM	MAX. FAN HP	MBH TOT. COOL	MBH SEN. COOL	MIN. E.E.R.	MIN. INT. HEAT	MIN. COP	K.W. AUX. HEAT	REQUIRED ACCESSORIES
PTAC-1	5250C-514	300	70	1/8	13.5	13.2	8.8	11.0	2.6	5.0	1,2,3,4
PTAC-2	5250C-514	350	70	1/8	13.5	13.2	8.8	11.0	2.8	5.0	1,2,3,4

NOTES:  
A. COOLING CAPACITY BASED ON 80 DEG. F, db/67 DEG. F, wb INDOOR ENTERING AIR TEMPERATURE AND 95 DEG. F, wb ENTERING OUTDOOR UNIT.  
B. HEATING CAPACITY BASED ON 70 DEG. F, db INDOOR ENTERING AIR TEMPERATURE AND 17 DEG. F, wb AIR ENTERING OUTDOOR UNIT.  
ACCESSORIES:  
1. WALL SLEEVE.  
2. ARCHITECTURAL EXTRUDED LOUVER.  
3. SUBBASE ASSEMBLY.  
4. CONDENSATE DRAIN KIT.  
SELECTIONS ARE BASED ON PRODUCTS BY CARRIER.

SCHEDULE - SPLIT SYSTEM A.C. UNIT (STRAIGHT ELECTRIC)											
TAG	MODEL No.	LOCATION	TOTAL CFM	O.A. CFM	MIN. FAN HP	MBH TOT. COOL	MBH SEN. COOL	MIN. E.E.R.	MIN. INT. HEAT	MIN. COP	REQUIRED ACCESSORIES
AC-1	FBAMA 024 SBCKD 024	FITNESS	600	200	1/4	22.4	22.4	16.8	10.0	10	1,3,4,5,6
AC-2	FBAMA 060 SBCKD 060	LEASING	2000	300	3/4	55.0	42.0	10.0	24	1,3,4,6,8	
AC-3	FBAMA 048 SBCKD 048	ACTIVITY	1000	200	3/4	46.0	34.3	10.0	15	1,3,4,6,8	

NOTES:  
A. COOLING CAPACITY BASED ON 80 DEG. F, db/67 DEG. F, wb INDOOR ENTERING AIR TEMPERATURE AND 95 DEG. F, wb ENTERING OUTDOOR UNIT.  
B. KW AUXILIARY HEATING CAPACITY BASED ON 240V ELECTRICAL SERVICE.  
ACCESSORIES:  
1. HEAT-COOL-AUTO THERMOSTAT.  
2. RETURN GRILLE / ACCESS PANEL.  
3. FILTER SECTION.  
4. COMPRESSOR SHORT CYCLE PROTECTION.  
5. AIR HANDLING UNIT/CONDENSING UNIT INTERLOCK.  
6. VERTICAL MOUNTED AIR HANDLER.  
7. LONG LINE REFRIGERANT SET (AS REQ'D).  
SELECTIONS ARE BASED ON PRODUCTS BY: ALLSTATE (AHU) / DUANE (HP)  
EQUAL PRODUCTS: AHU'S MUST BE SAME PHYSICAL DIMENSIONS TO BE CONSIDERED.

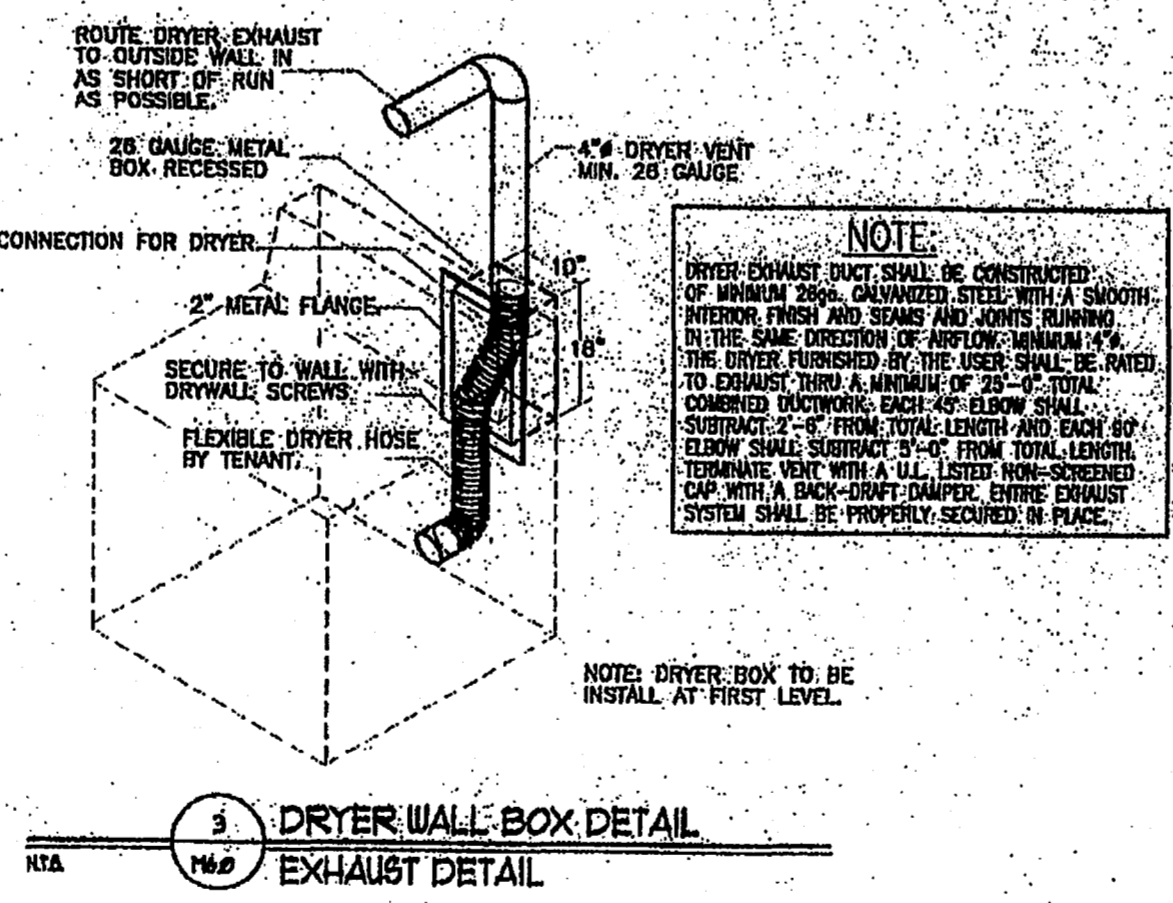
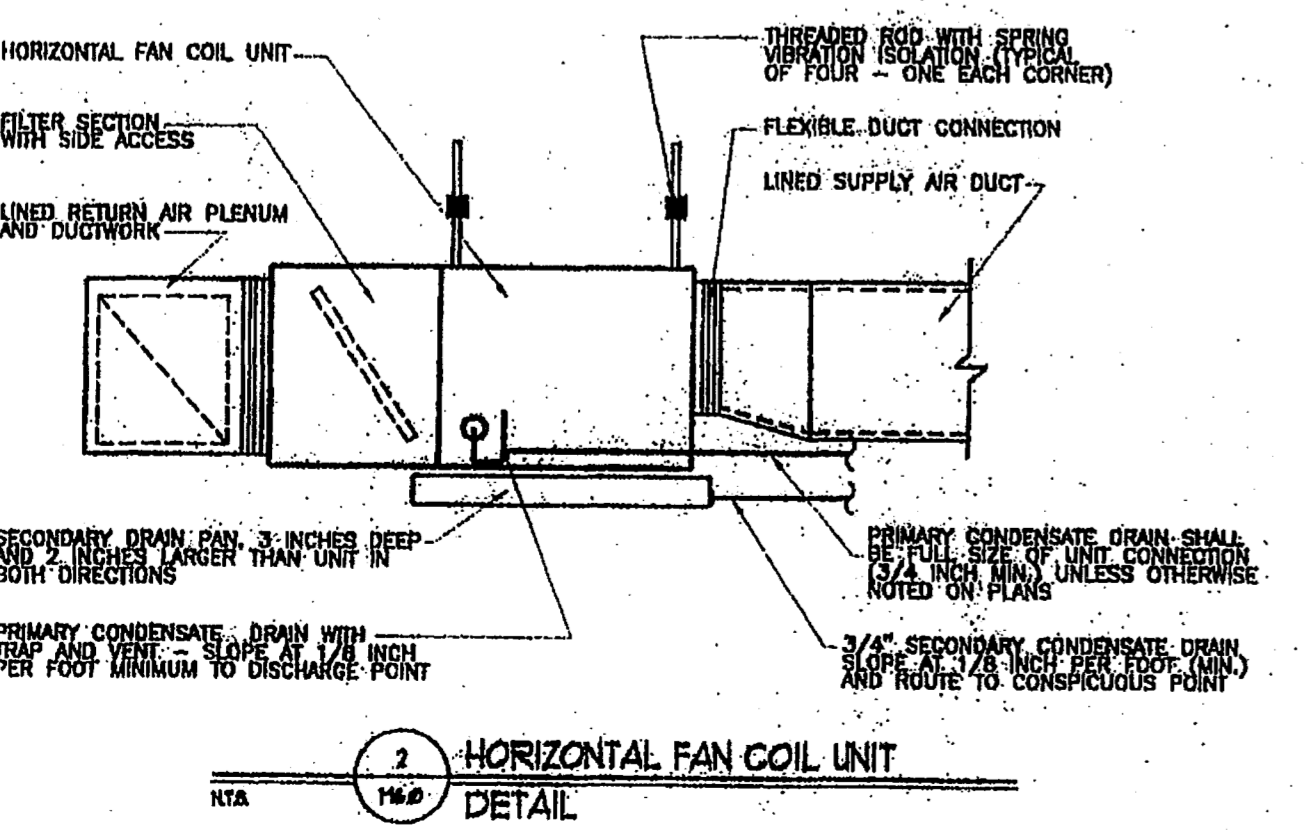
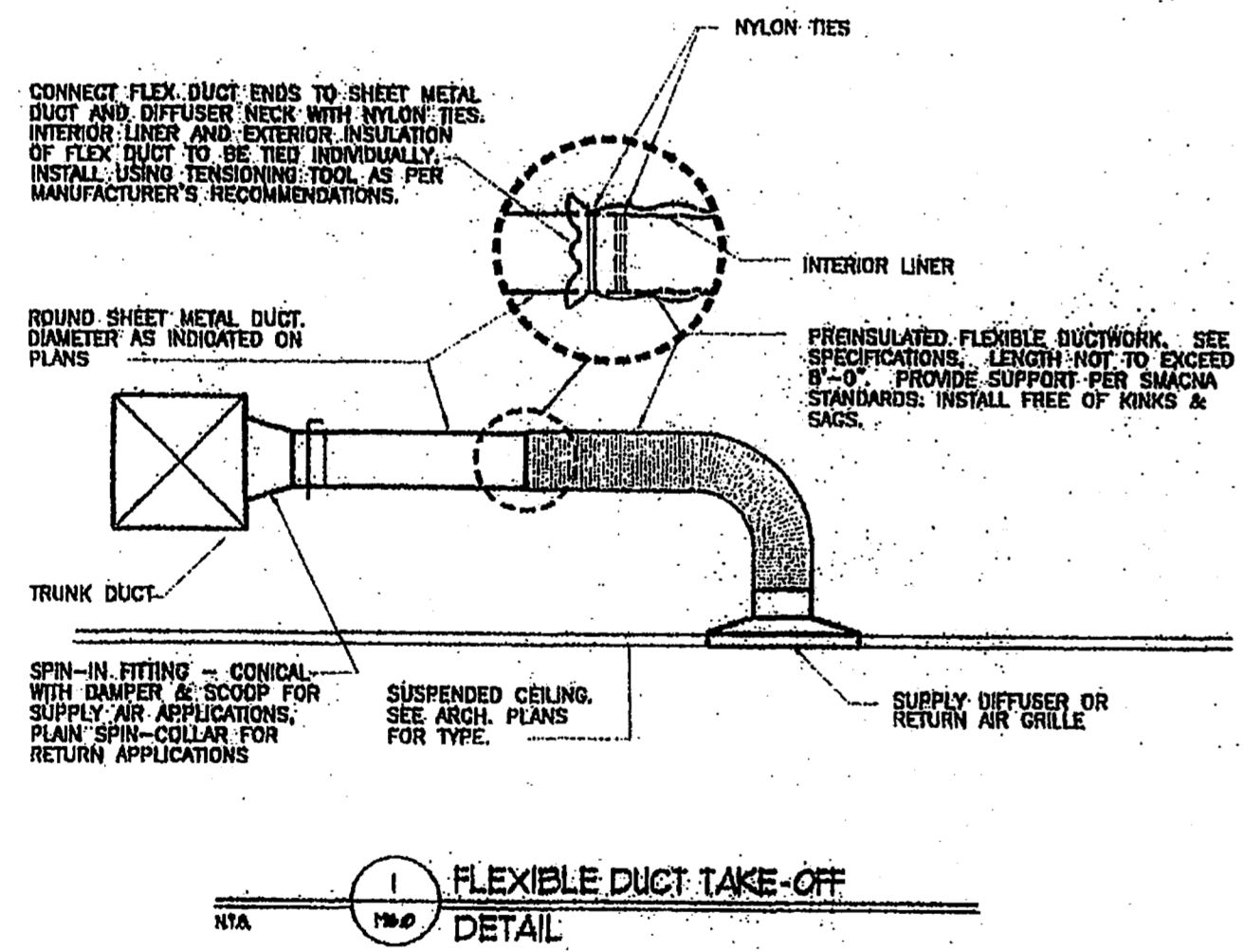
SCHEDULE - GRILLE, REGISTERS & DIFFUSERS									
TAG	SERIES	CFM	BLOW	DUTY	NECK SIZE	DAMPER	MATERIAL	ACCESSORIES	NOTES
A	110 (L)	50	3-WAY	SUPPLY	4"	8M	YES	STEEL	
B	110 (L)	75-100	3-WAY	SUPPLY	5"	8M	YES	STEEL	
C	110 (L)	100-125	3-WAY	SUPPLY	6"	10M	YES	STEEL	
D	110 (L)	125-175	3-WAY	SUPPLY	7"	12M	YES	STEEL	
E	110 (L)	175-200	3-WAY	SUPPLY	8"	14M	YES	STEEL	
F	RHD (MMA)			RETURN		ON DND	NO	ALUMINUM	
G	411 (H&C)	175-200	2-WAY	SUPPLY	8"	14M	YES	STEEL	3
H	411 (H&C)	75-100	2-WAY	SUPPLY	5"	10M	YES	STEEL	3

NOTES:  
A. REFER TO ARCHITECTURAL DRAWINGS FOR TYPE OF CEILING AND/OR SUSPENSION SYSTEM.  
B. FINISH SHALL BE OF THE TYPE AND COLOR SELECTED BY ARCHITECT; SUBMIT FINISH CHART WITH SHOP DRAWINGS.  
ACCESSORIES:  
1. FILTERS BEHIND GRILLE.  
2. HINGED FACE.  
3. ADJUSTABLE AIR DEFLECTING VANES.  
SELECTIONS ARE BASED ON PRODUCTS BY: (L) DUA, (H&C) HART & COOLEY, (MMA) METAL ARE  
EQUAL PRODUCTS: ANEMOSTAT - JAW, TITUS, CARNES, KRUGER, TUTTLE & BAILEY, AND PRICE.

SCHEDULE - FAN									
TAG	MODEL	DUTY	CFM	E.S.P.	MOTOR SIZE	RPM	DRIVE	WEIGHT (LB)	ACCESSORIES
F-1	878	EXHAUST	110	125"	110V	1050	DIRECT	15	1,2
F-2	878	EXHAUST	110	125"	110V	1050	DIRECT	15	1,2
F-3	878	EXHAUST	110	125"	110V	1050	DIRECT	15	1,2
F-4	878	EXHAUST	110	125"	110V	1050	DIRECT	15	1,2

ACCESSORIES:  
1. GRAVITY BACKDRIFT DAMPERS.  
2. WIRE INTO WALL SWITCH.  
3. PROVIDE WITH MATCHING ROOF/WALL CAP.  
SELECTIONS ARE BASED ON PRODUCTS BY: BROAD  
EQUAL PRODUCTS: GREENHECK, CARNES, JENNAIRE, OOKA, AMMERMAN

- ### H.V.A.C. NOTES
- ALL MECHANICAL EQUIPMENT AND INSTALLATIONS SHALL CONFORM WITH THE REQUIREMENTS OF THE STANDARD MECHANICAL CODE, THE STANDARD BUILDING CODE, THE FLORIDA ENERGY CODE (FPCA), AND ALL APPLICABLE LOCAL, STATE AND FEDERAL ORDINANCES.
  - BEFORE PURCHASING ANY MATERIALS OR STARTING ANY WORK, CONTRACTOR SHALL FIELD VERIFY ALL EXISTING CONDITIONS, DIMENSIONS, SIZES AND LOCATIONS OF EQUIPMENT, ETC. SHOWN ON THE DRAWINGS OR AFFECTING THE WORK AND SHALL REPORT ANY DEVIATIONS TO THE ARCHITECT.
  - SHOP DRAWINGS SHALL BE SUBMITTED TO AND APPROVED BY THE ARCHITECT PRIOR TO ORDERING, PURCHASING OR FABRICATING ANY MECHANICAL EQUIPMENT. SHOP DRAWINGS SHALL INCLUDE ALL EQUIPMENT SCHEDULED OR REFERRED TO ON THE DRAWINGS.
  - CONTRACTOR SHALL COORDINATE ELECTRICAL CHARACTERISTICS AND REQUIREMENTS OF ALL MECHANICAL EQUIPMENT WITH ELECTRICAL DRAWINGS PRIOR TO ORDERING EQUIPMENT. EQUIPMENT SHALL BE SUBMITTED ON THE DRAWINGS AND SHALL FURNISH EQUIPMENT WIRING FOR THE VOLTAGES SHOWN THEREIN.
  - ALL MECHANICAL EQUIPMENT REQUIRING ELECTRICAL POWER SHALL BE INSTALLED WITH DISCONNECT SWITCHES AT EACH PIECE OF EQUIPMENT. COORDINATE SWITCH TYPE WITH EQUIPMENT CHARACTERISTICS AND ELECTRICAL DRAWINGS.
  - ALL REQUIRED CONTROL WIRING NOT SHOWN ON THE ELECTRICAL DRAWINGS SHALL BE INCLUDED AS PART OF THE MECHANICAL WORK. WIRING IN HVAC PLENUM SPACES SHALL BE INSTALLED ACCORDING TO CODE REQUIREMENTS.
  - UNLESS NOTED OTHERWISE, STARTERS, SMOKE DETECTORS, TRANSFORMERS, CONTROLS AND CONTROL WIRING RELATED TO ALL MECHANICAL SYSTEMS SHALL BE FURNISHED AND INSTALLED BY THE MECHANICAL CONTRACTOR.
  - ALL MECHANICAL EQUIPMENT SHALL BE INSTALLED ACCORDING TO MANUFACTURER'S RECOMMENDATIONS.
  - ALL MECHANICAL EQUIPMENT AND SYSTEMS SHALL BE GUARANTEED FOR A PERIOD OF ONE YEAR AFTER ACCEPTANCE BY OWNER.
  - ALL HVAC COMPRESSORS SHALL HAVE EXTENDED 5-YEAR MANUFACTURER'S WARRANTY.
  - FOR EXACT LOCATION OF OUTDOOR AIR CONDITIONING UNITS SEE ARCHITECTURAL DRAWINGS.
  - INSTALL OUTDOOR AIR CONDITIONING EQUIPMENT LEVEL ON 4" THICK REINFORCED CONCRETE PADS, EXTENDING 8" BEYOND UNIT PERIMETER.
  - DUCTWORK SHALL BE CONSTRUCTED OF GALVANIZED SHEET METAL AS RECOMMENDED IN SMACNA LOW PRESSURE DUCT CONSTRUCTION STANDARDS LATEST EDITION OR 14-1/2" THICK FIBERGLASS DUCT BOARD WITH GLASS FABRIC REINFORCED VAPOR BARRIER MANVILLE TYPE 475 OR EQUAL. FIBERGLASS DUCTWORK AND TAPING SYSTEM SHALL BE USED IN ALL LISTS AND SHALL BE 11-1/2" DEPT. ALL FIBERGLASS DUCTWORK AND ACCESSORIES SHALL BE FABRICATED BY A MANUFACTURER'S AUTHORIZED FABRICATOR AND SHALL BE INSTALLED WITH THE FABRICATOR'S SUPERVISION ACCORDING TO MANUFACTURER'S RECOMMENDATIONS. FIBERGLASS DUCTWORK SHALL NOT BE USED OUTDOORS. FIRE DAMPERS SHALL BE INSTALLED IN ALL DUCTWORK PER LOCAL CODE. VETA AND SMOKE STAINWARRS SHALL COVER AND SEAL IN ALL DUCTWORK SHALL BE SEALED WITH MASTIC.
  - SHEET METAL SUPPLY AND RETURN DUCTWORK IN NON-AIR CONDITIONED AREAS AND MECHANICAL ROOMS SHALL BE INSULATED WITH 2" THICK FIBERGLASS DUCT INSULATION WITH VAPOR BARRIER 11-1/2" DEPT. EXTERIOR SUPPLY AND RETURN DUCTWORK SHALL BE CONSTRUCTED OF GALVANIZED SHEET METAL LINED WITH 2" THICK DUCT LINER BOARD WITH ALL JOINTS SEALED AND SEALED WEATHERTIGHT AND COVERED WITH RUST PROTECTIVE COATING OVER DUCT SURFACE.
  - EXHAUST DUCTWORK SHALL NOT BE INSULATED UNLESS NOTED OTHERWISE.
  - FLEXIBLE DUCTWORK SHALL BE AFD OR EQUAL WITH 2" INSULATION. MINIMUM R4.0 ROUNDS TO BE SAME SIZE AS DIFFUSER NECKS. MAX LENGTH 4' 6".
  - BOUND AND FLEXIBLE DUCTWORK SHALL BE CONNECTED TO MAIN RUCTS WITH SPIN-IN FITTINGS WITH AIR EXTRACTORS AND BALANCING DAMPERS.
  - SHEET METAL DUCTWORK SHOWN AS BEING INTERNALLY LINED SHALL BE LINED WITH 2" THICK 14-1/2" DEPT. FIBERGLASS DUCTWORK MANVILLE TYPE 475. EXTERIOR SUPPLY AND RETURN DUCTWORK SHALL BE CONSTRUCTED OF GALVANIZED SHEET METAL LINED WITH 2" THICK DUCT LINER BOARD WITH ALL JOINTS SEALED AND SEALED WEATHERTIGHT AND COVERED WITH RUST PROTECTIVE COATING OVER DUCT SURFACE.
  - DUCTWORK DIMENSIONS SHOWN ON THE DRAWINGS ARE INSIDE CLEAR DIMENSIONS.
  - CONDENSATE FROM ALL AIR CONDITIONING EQUIPMENT SHALL BE TRAPPED AND ROUTED TO THE NEAREST FLOOR DRAIN OR TO EXTERIOR DRY WELLS. CONDENSATE PIPING SHALL BE SLOPED AND TRAPPED AND INSULATED CORRECTLY IN HVAC PLenums. CONDENSATE SHALL BE PUMPED AS REQUIRED.
  - CONTRACTOR SHALL COORDINATE THE INSTALLATION OF ALL MECHANICAL EQUIPMENT, DUCTWORK, ETC. TO FIT WITHIN THE SPACE ALLOWED BY THE ARCHITECTURAL AND STRUCTURAL CONDITIONS. CUTTING OR OTHERWISE ALTERING ANY STRUCTURAL MEMBERS SHALL NOT BE PERMITTED WITHOUT WRITTEN PERMISSION FROM THE ARCHITECT.
  - LOCATIONS OF GRILLES, REGISTERS & DIFFUSERS SHOWN ON THE DRAWINGS ARE APPROXIMATE. COORDINATE EXACT LOCATIONS WITH LIGHTS, CEILING GRID, ETC.
  - DRYER EXHAUST DUCTWORK SHALL BE AN OASIS GALVANIZED METAL WITH SMOOTH INTERIOR FINISH. DRYER EXHAUST DUCTWORK SHALL BE INSTALLED AS CLOSE AS POSSIBLE TO EXTERIOR WALL OR TO EXTERIOR DRY WELLS. DRYER EXHAUST DUCTWORK SHALL NOT BE INSTALLED IN PLACES WHERE IT WILL BE IN CONTACT WITH FLAMMABLE MATERIALS. DRYER EXHAUST DUCTWORK SHALL NOT BE SECURED WITH SHEET METAL SCREWS.



Permit No	BLDG	Address	REVISED BY
01120881	BLDG 1	7700 COOPER CREEK BLVD	RESMILT
01120882	BLDG 2	7700 COOPER CREEK BLVD	RESMILT
01120883	BLDG 3	7700 COOPER CREEK BLVD	RESMILT
01120884	BLDG 4	7700 COOPER CREEK BLVD	RESMILT
01120885	BLDG 5	7700 COOPER CREEK BLVD	RESMILT
01120886	BLDG 6	7700 COOPER CREEK BLVD	RESMILT
01120887	BLDG 7	7700 COOPER CREEK BLVD	RESMILT
01120888	BLDG 8	7700 COOPER CREEK BLVD	RESMILT
01120889	BLDG 9	7700 COOPER CREEK BLVD	RESMILT
01120890	BLDG 10	7700 COOPER CREEK BLVD	RESMILT
01120891	BLDG 11	7700 COOPER CREEK BLVD	RESMILT
01120892	BLDG 12	7700 COOPER CREEK BLVD	RESMILT
01120893	BLDG 13	7700 COOPER CREEK BLVD	RESMILT
01120894	BLDG 14	7700 COOPER CREEK BLVD	RESMILT
01120895	BLDG 15	7700 COOPER CREEK BLVD	RESMILT
01120896	BLDG 16	7700 COOPER CREEK BLVD	RESMILT
01120897	BLDG 17	7700 COOPER CREEK BLVD	RESMILT
01120898	BLDG 18	7700 COOPER CREEK BLVD	RESMILT
01120899	BLDG 19	7700 COOPER CREEK BLVD	RESMILT
01120900	BLDG 20	7700 COOPER CREEK BLVD	RESMILT

13/14/2002

REVIEWED BY: JORDAN & SKALA ENGINEERS, INC.

DATE: 01-1-2008

01-1-2008

THESE DRAWINGS HAVE NOT BEEN REVIEWED FOR COMPLIANCE WITH THE (PLUMBING), (MECHANICAL), (GAS), (ELECTRICAL), CODE(S) ANY QUESTIONS REGARDING THE REQUIREMENTS OF THESE CODES SHOULD BE DIRECTED TO THE SENIOR INSPECTOR IN THE APPROPRIATE TRADE.

MAR-01-2002

Jordan & Skala Engineers, Inc.  
Job Number: 0110360  
8000 W. UNIVERSITY DRIVE, SUITE 200, BOCA RATON, FL 33433  
PHONE: (770) 447-2547, FAX: (770) 448-0282  
EMAIL: jordan@skala.com

COPYRIGHT © 2001, JORDAN & SKALA ENGINEERS, INC.