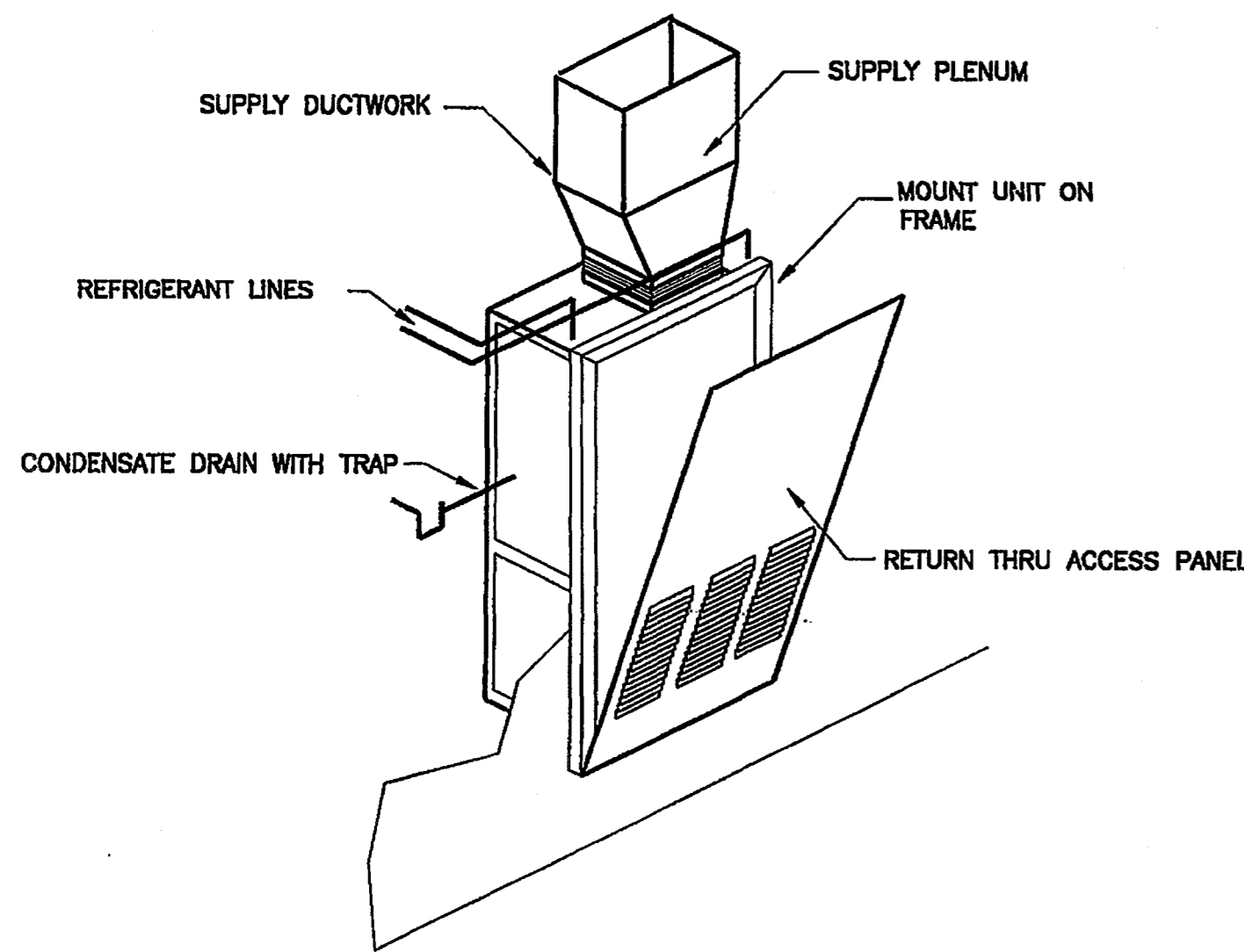


LEGEND

SYMBOL	DESCRIPTION	ABBREVIATIONS
	CEILING DIFFUSER W/FLEX DUCT	CD
	CEILING RETURN GRILLE W/ FLEX DUCT	C/RAG
	SIDEWALL SUPPLY AIR GRILLE	S. REG
	SIDEWALL RETURN AIR GRILLE	RAG
	FIRE DAMPER	FD
	MANUAL VOLUME DAMPER	MVD
	EXHAUST FAN	F---
	THERMOSTAT	T'STAT
	EQUIPMENT DESIGNATION	----
	AIR DISTRIBUTION DEVICE TAG, BALANCE TO 205 CFM	----
---	RETURN AIR	RA
---	SUPPLY AIR	S.A.
---	ABOVE FINISHED FLOOR	AFF
---	EXTERNAL STATIC PRESURE (IN W.C.)	ESP
---	DRY BULB	DB
---	WET BULB	WB
---	ENTERING AIR TEMPERATURE	EAT
---	LEAVING AIR TEMPERATURE	LAT
---	OUTSIDE AIR	OA



VERTICAL WALL INSERT AIR HANDLING UNIT DETAIL

M2.0 NOT TO SCALE

SCHEDULE-SPLIT SYSTEM A.C. UNIT (STRAIGHT ELECTRIC)

TAG	MODEL No.		LOCATION	TOTAL CFM	MAX. FAN HP	ESP	MBH TOT. COOL.	MBH SEN. COOL.	MIN. SEER	K.W. HEAT	ACCESSORIES
	AHU	COND UNIT									
HP-A1(A)	AW30	CK24-1	ALL LEVELS	800	1/3	.5"	23.0	17.2	10.0	7.3	1.3.4.5.6.
HP-A1(END)	AW30	CK30-1	TOP LEVEL	1000	1/3	.5"	27.0	20.0	10.0	7.3	1.3.4.5.6.
HP-A2(A)	AW30	CK24-1	ALL LEVELS	800	1/3	.5"	23.0	17.2	10.0	7.3	1.3.4.5.6.
HP-B1(A)	AW30	CK30-1	TOP LEVEL	1000	1/3	.5"	27.0	20.0	10.0	7.3	1.3.4.5.6.

AC-X(T) = TOP FLOOR UNITS AC-X(L) = LOWER FLOOR UNITS AC-X(A) = ALL UNITS
 NOTES A. COOLING CAPACITY BASED ON 80 DEG.F, db/67 DEG F, wb INDOOR ENTERING AIR TEMPERATURE AND 95 DEG.F, wb ENTERING OUTDOOR UNIT.
 B. ELECTRIC HEATER SIZE BASED ON 240v 1 PHASE

ACCESSORIES:
 1. HEAT-COOL-AUTO THERMOSTAT. 5. AIR HANDLING UNIT/CONDENSING UNIT INTERLOCK.
 2. RETURN GRILLE / ACCESS PANEL. 6. VERTICAL MOUNTED AIR HANDLER.
 3. FILTER SECTION. 7. LONG LINE REFRIGERANT SET (AS REQ'D).
 4. COMPRESSOR SHORT CYCLE PROTECTION.

SELECTIONS ARE BASED ON PRODUCTS BY : GOODMAN / JANITROL
 EQUAL PRODUCTS: AHU'S MUST BE SAME PHYSICAL DIMENSIONS TO BE CONSIDERED EQUAL PRODUCT

SCHEDULE - GRILLE, REGISTERS & DIFFUSERS

TAG	SERIES	CFM	BLOW	DUTY	NECK	SIZE	DAMPER	MATERIAL	ACCESSORIES
A	11D (L)	50	3-WAY	SUPPLY	4"	8x4	YES	STEEL	.
B	11D (L)	75-100	3-WAY	SUPPLY	5"	8x6	YES	STEEL	.
C	11D (L)	100-125	3-WAY	SUPPLY	6"	10x6	YES	STEEL	.
D	11D (L)	125-175	3-WAY	SUPPLY	7"	12x6	YES	STEEL	.
E	11D (L)	175-200	3-WAY	SUPPLY	8"	14x6	YES	STEEL	.
F	RHD (M*A)	----	----	RETURN	----	ON DWG	NO	ALUMINUM	.
G	411 (H&C)	175-200	2-WAY	SUPPLY	8"	14x6	YES	STEEL	3
H	411 (H&C)	75-100	2-WAY	SUPPLY	5"	10X4	YES	STEEL	3

A. REFER TO ARCHITECTURAL DRAWINGS FOR TYPE OF CEILING AND/OR SUSPENSION SYSTEM.
 B. FINISH SHALL BE OF THE TYPE AND COLOR SELECTED BY ARCHITECT. SUBMIT FINISH CHART WITH SHOP DRAWINGS.

ACCESSORIES:
 1. FILTERS BEHIND GRILLE 2. HINGED FACE 3. ADJUSTABLE AIR DEFLECTING VANES.
 SELECTIONS ARE BASED ON PRODUCTS BY (L) LIMA, (H&C) HART & COOLEY, (M*A) METAL AIRE
 EQUAL PRODUCTS: ANEMOSTAT, J&J, TITUS, CARNES, KRUEGER, TUTTLE & BAILEY, AND PRICE.

SCHEDULE - FAN

TAG	MODEL	DUTY	CFM	E.S.P.	MOTOR SIZE	RPM	DRIVE	WEIGHT (Lb)	ACCESSORIES
F-1	670	EXHAUST	50	.125"	110v	1050	DIRECT	15	1.2.
F-2	671	EXHAUST	80	.125"	110v	1050	DIRECT	15	1.2.
F-3	676	EXHAUST	110	.125"	110v	1050	DIRECT	15	1.2.

ACCESSORIES:
 1. GRAVITY BACKDRAFT DAMPERS 4. THERMOSTAT
 2. WIRE INTO WALL SWITCH. 5. PRESSURE CONTROL SWITCH
 3. INLINE MOUNTED.

SELECTIONS ARE BASED ON PRODUCTS BY BROAN
 EQUAL PRODUCTS: GREENHECK, CARNES, JENNAIRE, COOK, AMMERIAN.

H.V.A.C. NOTES

- ALL MECHANICAL EQUIPMENT AND INSTALLATIONS SHALL CONFORM WITH THE REQUIREMENTS OF THE STANDARD MECHANICAL CODE, THE STANDARD BUILDING CODE, THE STATE ENERGY CODE, NFPA 90A, 101 AND ALL APPLICABLE LOCAL CODES AND ORDINANCES.
- PRIOR TO PURCHASING ANY MATERIALS OR STARTING ANY WORK, CONTRACTOR SHALL FIELD VERIFY ALL EXISTING CONDITIONS, DUCTWORK SIZES AND LOCATIONS, EQUIPMENT, ETC. SHOWN ON THE DRAWINGS OR AFFECTING THIS WORK AND SHALL REPORT ANY DEVIATIONS TO THE ARCHITECT.
- SHOP DRAWINGS SHALL BE SUBMITTED TO AND APPROVED BY THE ARCHITECT PRIOR TO ORDERING, PURCHASING, OR FABRICATING ANY MECHANICAL EQUIPMENT. SHOP DRAWINGS SHALL INCLUDE: ALL EQUIPMENT SCHEDULED OR SPECIFIED ON THE DRAWINGS.
- CONTRACTOR SHALL COORDINATE ELECTRICAL CHARACTERISTICS AND REQUIREMENTS OF ALL MECHANICAL EQUIPMENT WITH ELECTRICAL DRAWINGS PRIOR TO ORDERING EQUIPMENT OR SUBMITTING SHOP DRAWINGS, AND SHALL FURNISH EQUIPMENT WIRED FOR THE VOLTAGES SHOWN THEREIN.
- ALL MECHANICAL EQUIPMENT REQUIRING ELECTRICAL POWER SHALL BE INSTALLED WITH DISCONNECT SWITCHES AT EACH PIECE OF EQUIPMENT. COORDINATE SWITCH TYPE WITH EQUIPMENT CHARACTERISTICS AND ELECTRICAL DRAWINGS.
- ALL REQUIRED CONTROL WIRING NOT SHOWN ON THE ELECTRICAL DRAWINGS SHALL BE INCLUDED AS PART OF THE MECHANICAL WORK. WIRING IN HVAC PLENUM SPACES SHALL BE INSTALLED ACCORDING TO CODE REQUIREMENTS.
- UNLESS NOTED OTHERWISE, STARTERS, SMOKE DETECTORS, TRANSFORMERS, CONTROLS AND CONTROL WIRING REQUIRED FOR ALL MECHANICAL SYSTEMS SHALL BE FURNISHED AND INSTALLED BY THE MECHANICAL CONTRACTOR.
- ALL MECHANICAL EQUIPMENT SHALL BE INSTALLED ACCORDING TO MANUFACTURER'S RECOMMENDATIONS.
- ALL MECHANICAL EQUIPMENT AND SYSTEMS SHALL BE GUARANTEED FOR A PERIOD OF ONE YEAR AFTER ACCEPTANCE BY OWNER.
- ALL HVAC COMPRESSORS SHALL HAVE EXTENDED 5-YEAR MANUFACTURER'S WARRANTY.
- FOR EXACT LOCATION OF OUTDOOR AIR CONDITIONING UNITS SEE ARCHITECTURAL DRAWINGS.
- INSTALL OUTDOOR AIR CONDITIONING EQUIPMENT LEVEL ON 4" THICK REINFORCED CONCRETE PADS, EXTENDING 6" BEYOND UNIT PERIMETER.
- DUCTWORK SHALL BE CONSTRUCTED OF GALVANIZED SHEET METAL AS RECOMMENDED IN SMACNA LOW PRESSURE DUCT CONSTRUCTION STANDARDS, LATEST EDITION, OR 1" THICK FIBERGLASS DUCT BOARD WITH GLASS FIBER REINFORCED VAPOR BARRIER, MANVILLE TYPE 475 OR EQUAL. FIBERGLASS DUCTWORK AND TAPING SYSTEM SHALL BE U.L.-181 LISTED AND SHALL BEAR U.L. LABEL. ALL FIBERGLASS DUCTWORK AND ACCESSORIES SHALL BE FABRICATED BY A MANUFACTURER'S AUTHORIZED FABRICATOR AND SHALL BE INSTALLED WITH THE FABRICATOR'S SUPERVISION ACCORDING TO MANUFACTURER'S RECOMMENDATIONS. FIBERGLASS DUCTWORK SHALL NOT BE USED OUTDOORS. FIRE DAMPERS SHALL BE INSTALLED IN ALL DUCTWORK PER LOCAL CODE, NFPA AND SMACNA STANDARDS. ALL JOINTS AND SEAMS IN ALL DUCTWORK SHALL BE SEALED WITH MASTIC.
- SHEET METAL SUPPLY AND RETURN DUCTWORK IN NON-AIR CONDITIONED AREAS AND MECHANICAL ROOMS SHALL BE INSULATED WITH 2" THICK FIBERGLASS DUCT INSULATION WITH FOIL VAPOR BARRIER, U.L. LISTED, MINIMUM R=6.0. EXTERIOR SUPPLY AND RETURN DUCTWORK SHALL BE CONSTRUCTED OF GALVANIZED SHEET METAL, LINED WITH 2" THICK DUCT LINER BOARD, WITH ALL SEAMS CAULKED AND SEALED WEATHERTIGHT, AND COATED WITH RUST PREVENTIVE COATING OVER ENTIRE DUCT SURFACE.
- EXHAUST DUCTWORK SHALL NOT BE INSULATED UNLESS NOTED OTHERWISE.
- FLEXIBLE DUCTWORK SHALL BE ATCO OR EQUAL WITH 2" INSULATION MINIMUM R = 6.0. RUNOUTS TO BE SAME SIZE AS DIFFUSER NECKS.
- ROUND AND FLEXIBLE DUCTWORK SHALL BE CONNECTED TO MAIN DUCTS WITH SPIN-IN FITTINGS WITH AIR EXTRACTORS AND BALANCING DAMPERS.
- SHEET METAL DUCTWORK SHOWN AS BEING INTERNALLY LINED SHALL BE LINED WITH 1" THICK 1-1/2 LB./CU. FT. DENSITY DUCTLINER, MANVILLE LINACOUSTIC OR EQUAL. LINE ALL DUCTWORK MIN. 10'-0" DOWNSTREAM OF ALL AIR HANDLING UNITS.
- DUCTWORK DIMENSIONS SHOWN ON THE DRAWINGS ARE INSIDE CLEAR DIMENSIONS.
- CONDENSATE FROM ALL AIR CONDITIONING EQUIPMENT SHALL BE TRAPPED AND ROUTED TO THE NEAREST FLOOR DRAIN OR TO EXTERIOR DRAIN. CONDENSATE PIPING SHALL BE SCHEDULE 40 PVC (EXCEPT INSULATED COPPER IN HVAC PLENUMS). CONDENSATE SHALL BE PUMPED AS REQUIRED.
- CONTRACTOR SHALL COORDINATE THE INSTALLATION OF ALL MECHANICAL EQUIPMENT, DUCTWORK, ETC. TO FIT WITHIN THE SPACE ALLOWED BY THE ARCHITECTURAL AND STRUCTURAL CONDITIONS. CUTTING OR OTHERWISE ALTERING ANY STRUCTURAL MEMBERS SHALL NOT BE PERMITTED WITHOUT WRITTEN PERMISSION FROM THE ARCHITECT.
- LOCATIONS OF GRILLES, REGISTERS, & DIFFUSERS SHOWN ON THE DRAWINGS ARE APPROXIMATE. COORDINATE EXACT LOCATIONS WITH LIGHTS, CEILING GRID, ETC.
- DRYER EXHAUST DUCTWORK SHALL BE 28 GAUGE GALVANIZED STEEL, WITH SMOOTH INTERIOR FINISH ROUTED TO EXTERIOR WALL CAP WITH BDD, AS DIRECT AS POSSIBLE. JOINTS TO BE INSTALLED AS TO NOT RESTRICT AIR FLOW WITH OVERLAP. PROVIDE METAL STRIPS AT EACH 4'-0" JOINT. JOINTS TO BE TAPPED WITH REFLECTIVE ALUMINUM TAPE. (FLEXIBLE DUCTWORK WILL NOT BE ACCEPTABLE). DO NOT SECURE DUCTWORK WITH SHEET METAL SCREWS.

THESE DRAWINGS HAVE NOT BEEN REVISIONED FOR COMPLIANCE WITH THE (PLUMBING) (MECHANICAL) (GAS) (ELECTRICAL) CODES OR ANY OTHERS. REVISIONS TO THESE CODES SHOULD BE REFERRED TO THE AGENCY AFFECTED BY THE APPROPRIATE TITLE.

JOB PLANS
 Must Be Accessible
 To Building Inspectors

REVIEWED FOR CODE COMPLIANCE WITH THE FLORIDA BUILDING CODE, MANATEE COUNTY BUILDING DEPARTMENT

PERMIT NO: 0120814
 REVIEW COMPLETED: 11-12-02
 PLANS EXAMINER: EB RW

Jordan & Skala Engineers, Inc.
 Job Number - 010380
 8030-P UNITY DRIVE, NORCROSS, GA 30071
 PHONE (770)447-2647 FAX (770)448-0282
 EMAIL: jse@jordanandskala.com

Ted Front
 Architect

10000 South PARSONS
 P.O. Box 82082
 Houston, Texas 77282
 Tel: (281) 815-3557
 Fax: (281) 531-4535

Design/Construct
 Moseley & Associates
 11000 West Loop
 Houston, Texas 77042

CAROLINA LANDINGS
 At University Place
 Manatee County, Florida
 Job No. 010380

CLIENT REVIEW	
Date:	11-27-01
INITIAL PERMIT REVIEW	
Date:	12-05-01
PERMIT ISSUE	
Date:	12-10-01
PERMIT PRICING REVISION	
Date:	01-28-02
Date:	
Date:	
Date:	
Date:	

M2.0