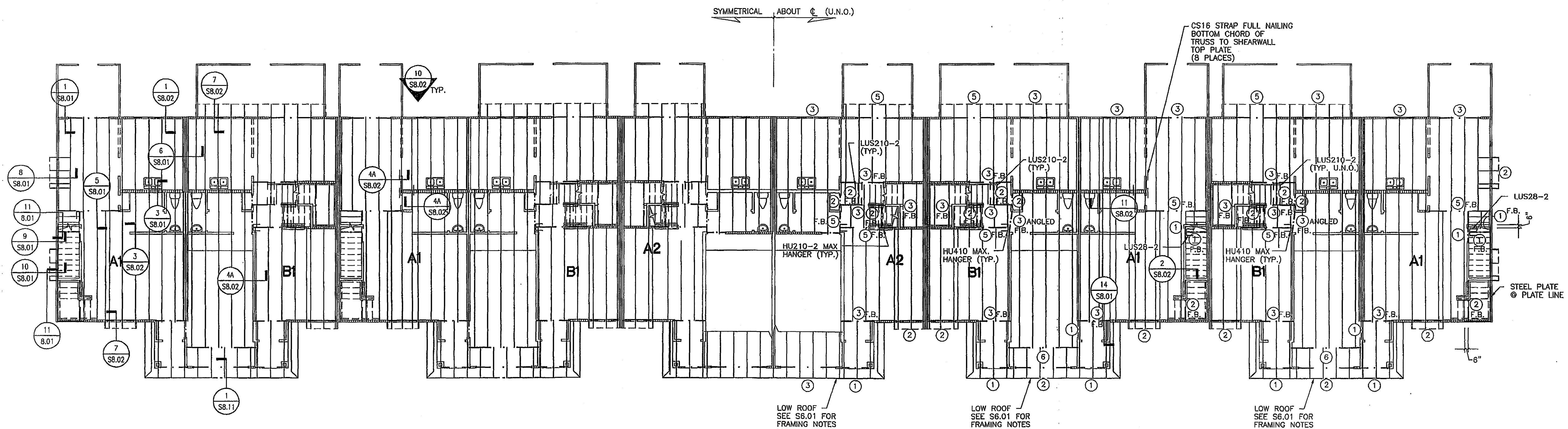


FRAMING NOTES:

- 1.) FLOOR FRAMING TO BE 18" DEEP TRUSSES @ 24" O.C. (MAX. U.N.O.)
- 2.) BALCONY FRAMING TO BE 15" DEEP TRUSSES @ 24" O.C. (MAX. U.N.O.)
- 3.) CORRIDOR FRAMING TO BE 15" DEEP TRUSSES @ 24" O.C. (MAX.)
- 4.) SHADED WALLS INDICATE INTERIOR LOAD BEARING WALLS.

BEAM / HEADER SCHEDULE

①	2 - 2 X 8
②	2 - 2 X 10
③	2 - 2 X 12
④	3 - 2 X 12
⑤	3 1/2 X 9 1/4 PSL
⑥	3 1/2 X 11 1/4 PSL



Project  
**CAROLINA LANDINGS APARTMENTS**  
 MANATEE COUNTY, FLORIDA  
 TOWNHOME RENTAL COMMUNITY



**CONSULTING ENGINEERS**

CORPORATE OFFICE  
 10101 Southwest Freeway, Suite 600  
 Houston, Texas 77074-1126  
 713.779.7252 1.800.422.7252  
 FAX: 713.779.1173  
 e-mail: sea@seahouston.com  
 Louisville, Kentucky 502.428.8709  
 Orlando, Florida 407.893.8200

ISSUE DATES

Review Issue  
 xxxxx  
 Bid Issue  
 12-10-2001  
 Permit Issue  
 12-10-2001  
 Construction Issue  
 03-12-2002

Revisions  
 02-07-2002 REISSUE FOR PERMIT-AMENITY

Drawn ES	Project 21510
Drawn BA	Sheet
Check MLS	Date 03-12-2002
Date 08-07-03	<b>S4.01</b>

**TRUSS NOTE:**  
 FOR ACTUAL TRUSS LAYOUT, REFER TO TRUSS SHOP DRAWINGS BY RAZOR TRUSS.

**FLOOR FRAMING PLAN**  
 BUILDING NO'S: 1 - 20  
 SCALE: 1/8" = 1'-0"

AS BUILT ISSUE  
 08-07-03