

INITIAL PERMIT REVIEW	Date: 12-05-01
PERMIT ISSUE	Date: 12-10-01
PERMIT/PRICING REVISION	Date: 01-28-02
AS BUILT ISSUE	Date: 08-07-03
	Date:
	Date:
	Date:

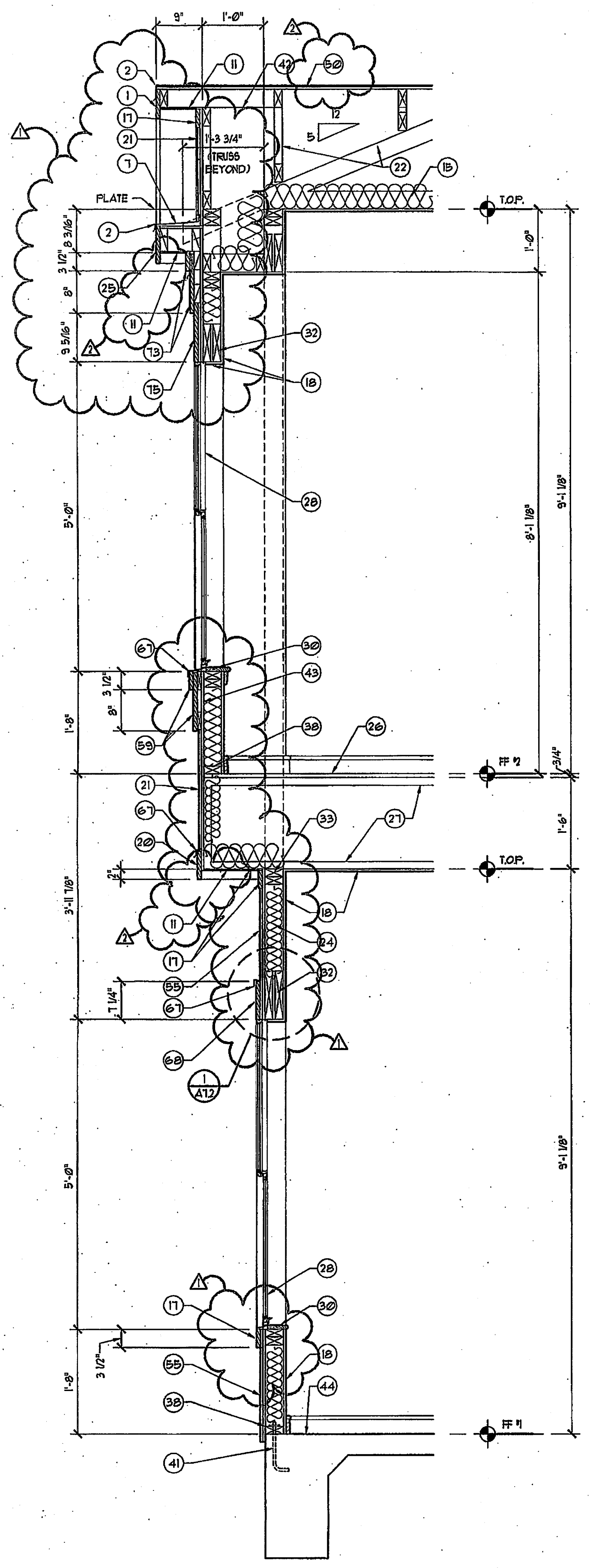
GENERAL NOTES:

- Painted horizontal cementitious siding to be James Hardie "Sentry Woodgrain MF", sizes as noted. Butt siding to trim. Install over "Moisture and Wind Barrier Building Wrap" over 1/2" plywood sheathing.
- All exterior fascias, casings and trim to be James Hardie "Harditrim HLD Rustic Grain" (3/4" thick) cementitious trim boards. Provide 1/8" Harditrim blocking behind window and door trim.

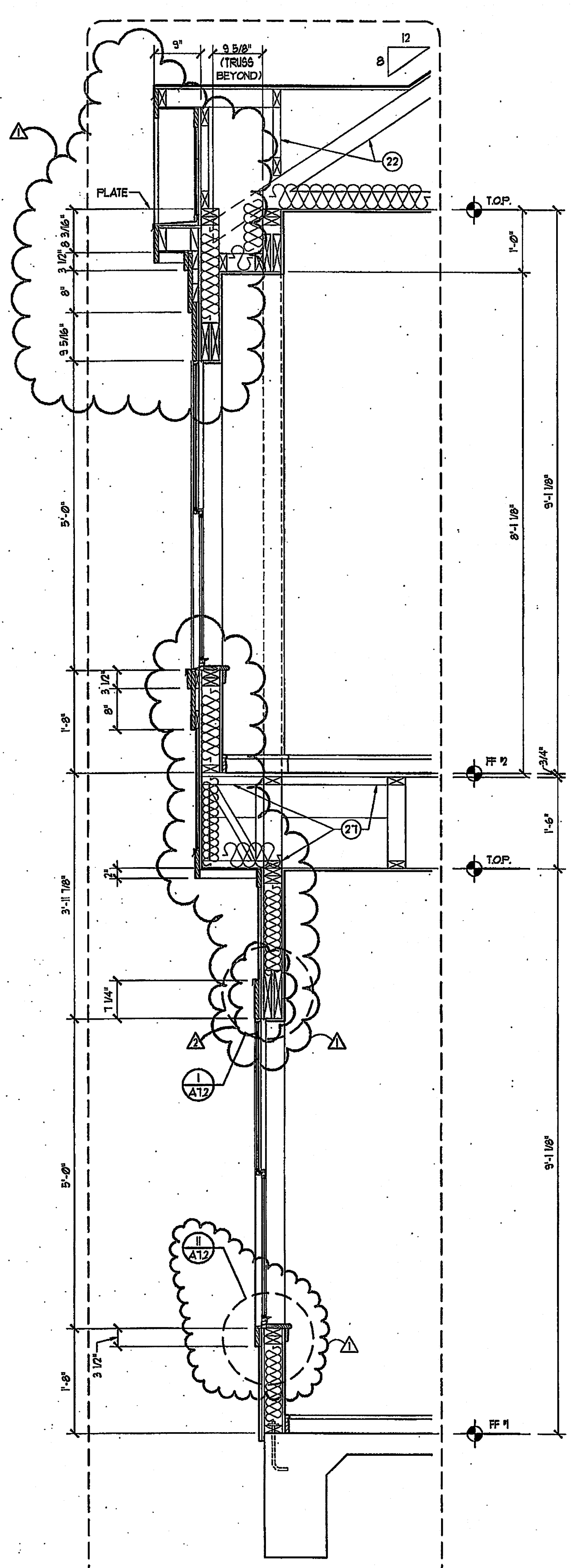
WALL SECTION NOTES:

(Shown with round targets. Not all notes used on this sheet.)

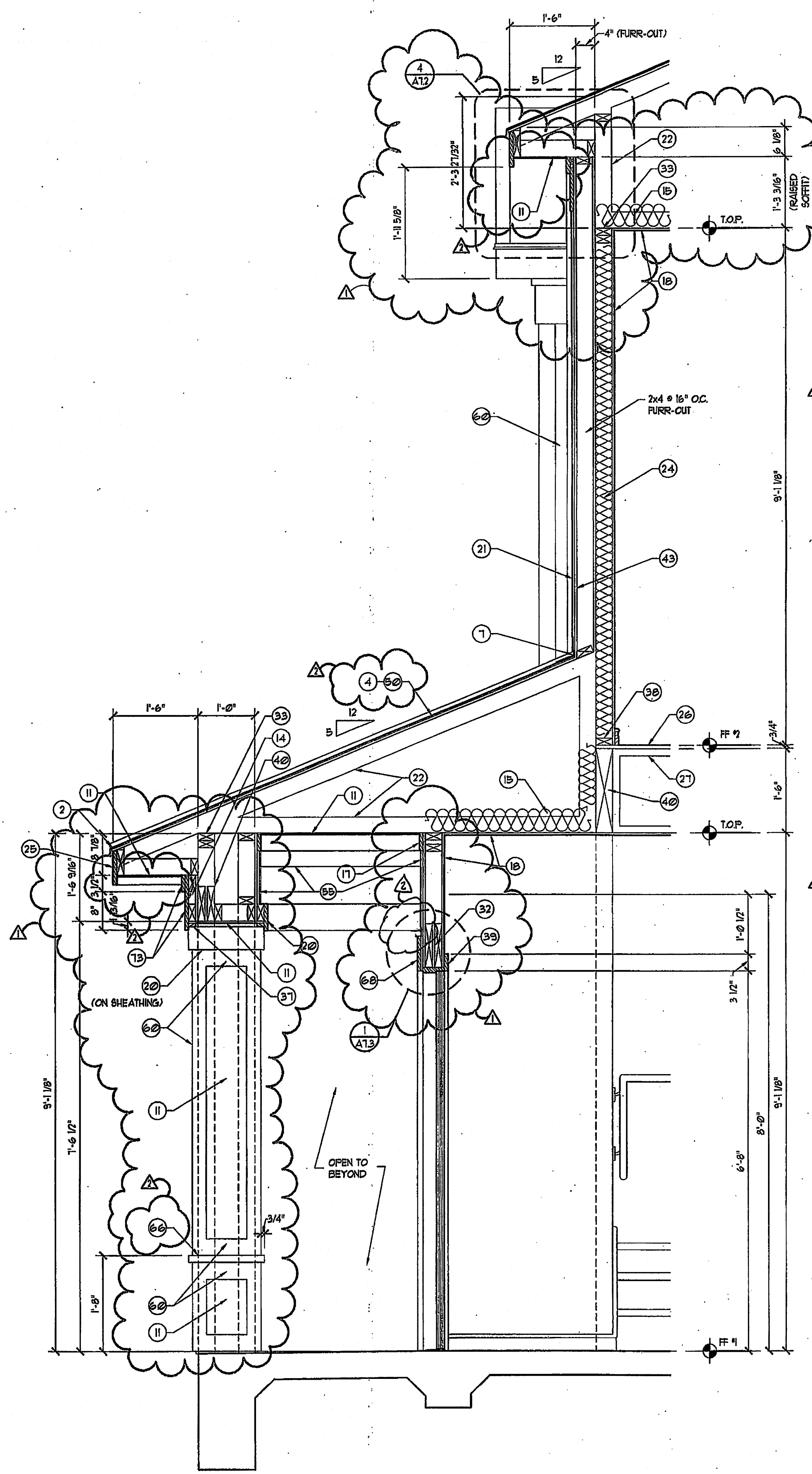
- 6" Harditrim HLD" (3/4" thk.) pt. fascia.
- Metal flashing turn down with drip edge over fascia.
- Provide painted metal "Z" flashing at all window and door headers and at exposed horizontal trim conditions.
- 24 GA. Galvalume" Standing seam metal roof (12" expression) on 1-layer 3/8" felt over 5/8" OSB plywood roof deck, nailed to framing, (provide clips as required).
- Brick veneer with metal ties at 24" o.c. horizontal every 4th course over sheathing (typical).
- 2x6 Wd. Ft. frame.
- Metal flashing typical, 6" leg each way.
- Brick rowlock sill projected 1/2" from nominal face of brick.
- 1x6 expansion joint, doweled.
- Brick soldier course, projected 3/4" from nominal face of brick.
- Vented aluminum soffit.
- Galvanized brick lintel, painted.
- Concrete sidewalk.
- 2x Wood blocking as required.
- R-19 insulation at attic.
- Vinyl-clad wire shelving.
- 4" Harditrim HLD" (3/4" thk.) pt. trim.
- 1/2" gypsum board, painted.
- 2-2x6 top plate.
- 6" Harditrim HLD" (3/4" thk.) pt. trim.
- Painted cementitious siding veneer (6 1/4" boards with 5" expression, 1 1/4" overlap).
- Prefabricated roof trusses at 24" o.c. (Re: Structural).
- Flexible flashing with weep holes every third unit.
- R-11 batt insulation at exterior walls and tenant separation walls.
- 8" Harditrim HLD" (3/4" thk.) pt. fascia.
- 3/4" T.G. plywood floor, glue and screw to trusses.
- Prefabricated floor trusses at 24" o.c. (Re: Structural).
- Aluminum window frame.
- 3 1/2" high wood paint base board.
- 3/4"x4" synthetic marble sill.
- 2 1/2" wide painted door casing.
- 2-2x header, Re: Structural.
- 2-2x4 top plate.
- Wood paint door frame.
- Aluminum threshold set in sealant.
- Concrete patio.
- 1x2 Wd. Ft. trim.
- 2x4, 2x6 or 2x8 plate (treated at base).
- 1x Wd. Ft. trim.
- Beam (Re: Structural).
- Anchor bolts, Re: Structural.
- 2x4 soffit framing at 24" o.c.
- Moisture and Wind Barrier Building Wrap over 1/2" plywood sheathing.
- Concrete foundation, Re: Structural.
- Painted metal gutter over 8" Harditrim HLD" (3/4" thk.) fascia, with downspouts to concrete splash block at grade.
- Stainless steel sink w/ disposal.
- Granite countertop w/ 1/2" bullnose edge and 4" granite splash at Kitchen and Master bath. FLAM countertop w/ rolled splash at other baths.
- Asphalt pavement.
- Overhead garage door 4 track.
- Composition shingles over 3/8" felt over 5/8" OSB plywood roof deck, nailed to framing.
- 6"x6" ceramic tile, extend 4" min. in front of tubs. Alternate: 3 piece fiberglass tub surround. (Provide deductive alternate).
- 2x8 roof framing per Structural drawings.
- Not used.
- 2x6 framing at stair landings.
- Painted cementitious siding veneer (9 1/2" boards with 8 1/4" expression, 1 1/4" overlap).
- 5/8" Firecode Type "X" gypsum board at walls and ceiling under interior stair, and at Tenant separation walls.
- 1x6 painted wood cap with door casing below.
- Insulation baffle.
- 4" Harditrim HLD" (3/4" thk.) over 12" Harditrim HLD" (3/4" thk.) pt. (over 1x blocking).
- 1/4" Hardipanel" pt.
- Screened Patio enclosure (provide Shop Drawings).
- Edge vent.
- 1/2" exterior grade soffit board.
- Harditrim HLD" (3/4" thk.) cut as required.
- Air handler panel with integral return air grille.
- 2x2 Wd. Ft. treated drip rail.
- Metal Z-flashing.
- 8" Harditrim HLD" (3/4" thk.) pt. trim.
- 1 1/2" dia. wd. pt. handrail.
- Brushed chrome shower rod, anchored to wall.
- Not used.
- 1" Harditrim HLD" (3/4" thk.) over 12" Harditrim HLD" (3/4" thk.) pt. (over 2x blocking).
- 4" Harditrim HLD" (3/4" thk.) over 10" Harditrim HLD" (3/4" thk.) pt.
- 12" Harditrim HLD" (3/4" thk.) pt.
- Crown mold refer to finish schedule.
- Wd. Ft. base trim refer to finish schedule.
- Wd. Ft. trim band refer to finish schedule.
- 2-2x8 Top plate.
- Brick soldier course (not projected).
- Brick rowlock course (projected 3/4").
- Brick rowlock course (projected 2 1/4").
- 1/4" Luan plywood underlayment over plywood floor deck at 2nd floor bathrooms.



1 WALL SECTION
AB/6 3/4" = 1'-0"



2 WALL SECTION
AB/6 3/4" = 1'-0"



3 WALL SECTION
AB/6 3/4" = 1'-0"