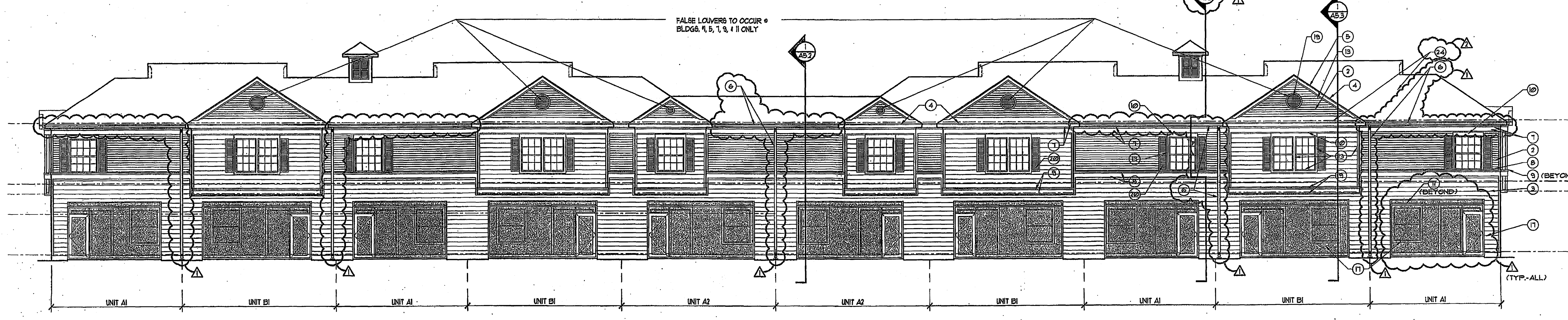


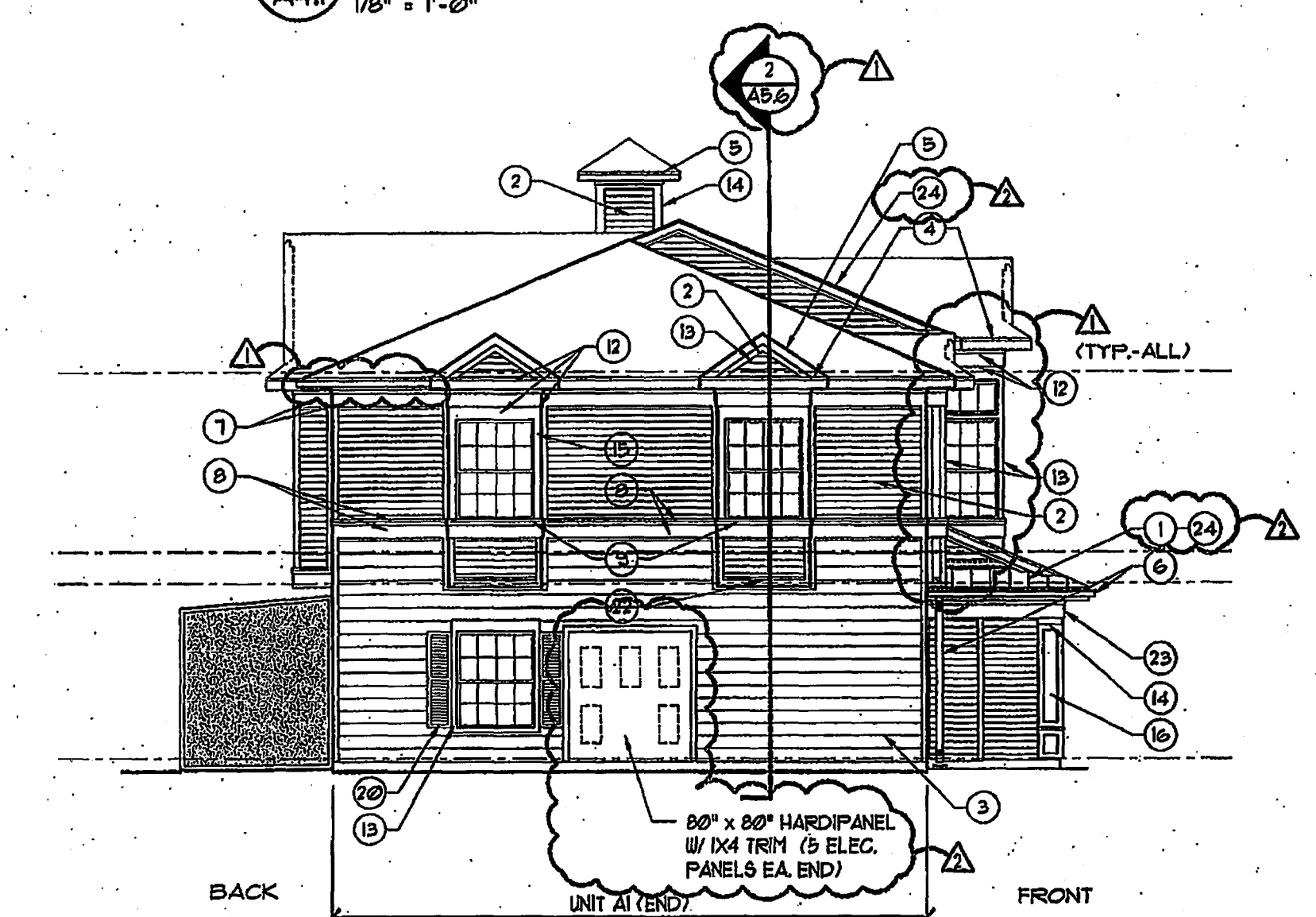
1 BUILDING TYPE 1 - Front Elevation
 A4.1 1/8" = 1'-0"

EXACT LOCATIONS OF METAL ROOF VARY. REFER TO SHEET A1 FOR EXACT LOCATIONS.



2 BUILDING TYPE 1 - Back Elevation
 A4.1 1/8" = 1'-0"

FALSE LOUVERS TO OCCUR @ BLDGS. 4, 5, 7, 9, 11 ONLY



3 BUILDING TYPE 1 - Side Elevation
 A4.1 1/8" = 1'-0"

80" x 80" HARDIPANEL W/ 1/4" TRIM (5 ELEC. PANELS EA. END)

GENERAL NOTES:

1. Painted horizontal cementitious siding to be James Hardie "Sentry Woodgrain MP", sizes as noted. Butt siding to trim. Install over "Moisture and Wind Barrier Building Wrap" over 1/2" plywood sheathing.
2. All exterior fascias, casings and trim to be James Hardie "Harditrim HLD Rustic grain" (3/4" thick) cementitious trim boards. Provide 1/16" Harditrim blocking behind windows and doors.

NOTES TO EXTERIOR ELEVATIONS:
 (Shown with round targets. Not all notes are used on this sheet.)

1. 24 GA. "Galvalume" standing seam metal roof (12" expression) on 1-layer 3/8" felt over 5/8" OSB plywood roof deck, nailed to framing (provide clips as req'd).
2. Painted cementitious siding veneer @ 1/4" boards with 3" expression, 1 1/4" overlap.
3. Painted cementitious siding veneer @ 1/2" boards w/ 3 1/4" expression, 1 1/4" overlap.
4. 2" Harditrim HLD" (3/4" thk.) pt. fascia w/ mtl. roof edge flashing.
5. 6" Harditrim HLD" (3/4" thk.) pt. fascia w/ mtl. roof edge flashing (typ. at gable fascias).
6. Prefinished metal gutter over 2" Harditrim HLD" (3/4" thk.) fascia, with downspouts to concrete splash block at grade.
7. 4" Harditrim HLD" (3/4" thk.) over 10" Harditrim HLD" (3/4" thk.) pt. (over k blocking).
8. Z-flashing over 4" Harditrim HLD" (3/4" thk.) over 12" Harditrim HLD" (3/4" thk.) pt.
9. Z-flashing over 4" Harditrim HLD" (3/4" thk.) over 12" Harditrim HLD" (3/4" thk.) pt. over 2x blocking.
10. Z-flashing over 8" Harditrim HLD" (3/4" thk.) pt. trim over 4" Harditrim 1/16" (1/16" thk.) blocking.
11. Z-flashing over 8" Harditrim HLD" (3/4" thk.) pt. At windows: over 8" Harditrim 1/16" (1/16" thk.) blocking.
12. 4" Harditrim HLD" (3/4" thk.) over 10" Harditrim HLD" (3/4" thk.) pt. over 10" Harditrim HLD" (3/4" thk.) window trim, pt.
13. 4" Harditrim HLD" (3/4" thk.) trim, pt. At windows: over 4" Harditrim 1/16" (1/16" thk.) blocking.
14. 1/4" Harditrim HLD" (3/4" thk.) trim, pt. (cut to fit).
15. Harditrim HLD" (3/4" thk.) trim, pt. (cut to fit).
16. Columns: 4" Harditrim HLD" (3/4" thk.) w/ 1/4" painted Hardipanel" infill, w/ 2x2 treated Wd. Pl. wainscot band.
17. Screened Patio enclosure (provide Shop Drawings).
18. 12" diameter vinyl false louver with 4" outside vinyl trim.
19. 24" diameter vinyl false louver with 4" outside vinyl trim.
20. Vinyl false shutters (15"x36").
21. Vinyl false shutters (15"x36").
22. Z-flashing over 6" Harditrim HLD" (3/4" thk.) pt. trim.
23. 1" Harditrim HLD" (3/4" thk.) over 10" Harditrim HLD" (3/4" thk.) pt. (over 2x blocking).
24. Composition shingles over 3/8" felt over 5/8" OSB plywood roof deck, nailed to framing.
25. Brick veneer. (Amenity Bldg. only)
26. Brick soldier (not projected). (Amenity Bldg. only)
27. Brick soldier (projected 3/4"). (Amenity Bldg. only)
28. Brick rowlock (projected 3/4"). (Amenity Bldg. only)
29. Brick rowlock (projected 1 1/2"). (Amenity Bldg. only)
30. Brick rowlock (projected 2 1/4"). (Amenity Bldg. only)
31. 2" Harditrim HLD" (3/4" thk.) pt. trim. (Amenity Bldg. only)

AS BUILT ISSUE
 08-07-03

CLIENT REVIEW	Date: 11-29-01
INITIAL PERMIT REVIEW	Date: 12-05-01
PERMIT ISSUE	Date: 12-10-01
PERMIT PRICING REVISION	Date: 01-24-02
AS BUILT ISSUE	Date: 08-07-03
Date:	
Date:	
Date:	